




# Disentangling Carbon Concentration Changes Along Pathways of North Atlantic Subtropical Mode Water

Daan Reijnders<sup>1</sup> , Dorothee C. E. Bakker<sup>2</sup> , and Erik van Sebille<sup>1</sup> 

<sup>1</sup>Institute for Marine and Atmospheric research Utrecht, Utrecht University, Utrecht, The Netherlands, <sup>2</sup>Centre for Ocean and Atmospheric Sciences, School of Environmental Sciences, University of East Anglia, Norwich, UK

### Key Points:

- Carbon transformations along pathways of North Atlantic Subtropical Mode Water are split into mixing and biogeochemical contributions
- Along paths into, within, and out of this mode water, mixing and biogeochemistry alter carbon in water parcels over a range of timescales
- Enrichment is highest during mixed layer subduction, which few parcels undergo annually; persistence in mode water is the dominant pathway

### Supporting Information:

Supporting Information may be found in the online version of this article.

### Correspondence to:

D. Reijnders,  
b.j.h.r.reijnders@uu.nl

### Citation:

Reijnders, D., Bakker, D. C. E., & van Sebille, E. (2024). Disentangling carbon concentration changes along pathways of North Atlantic subtropical mode water. *Journal of Geophysical Research: Oceans*, 129, e2023JC020814. <https://doi.org/10.1029/2023JC020814>

Received 11 DEC 2023

Accepted 29 JUN 2024

### Author Contributions:

**Conceptualization:** Daan Reijnders, Dorothee C. E. Bakker, Erik van Sebille

**Data curation:** Daan Reijnders

**Formal analysis:** Daan Reijnders, Dorothee C. E. Bakker, Erik van Sebille

**Funding acquisition:** Erik van Sebille

**Investigation:** Daan Reijnders

**Methodology:** Daan Reijnders, Dorothee C. E. Bakker, Erik van Sebille

**Project administration:** Daan Reijnders, Erik van Sebille

**Software:** Daan Reijnders

**Supervision:** Erik van Sebille

**Validation:** Daan Reijnders, Dorothee C. E. Bakker, Erik van Sebille

**Visualization:** Daan Reijnders

**Writing – original draft:** Daan Reijnders

© 2024. The Author(s).

This is an open access article under the terms of the [Creative Commons Attribution License](https://creativecommons.org/licenses/by/4.0/), which permits use, distribution and reproduction in any medium, provided the original work is properly cited.

**Abstract** North Atlantic subtropical mode water (NASTMW) serves as a major conduit for dissolved carbon to penetrate into the ocean interior by its wintertime outcropping events. Prior research on NASTMW has concentrated on its physical formation and destruction, as well as Lagrangian pathways and timescales of water into and out of NASTMW. In this study, we examine how dissolved inorganic carbon (DIC) concentrations are modified along Lagrangian pathways of NASTMW on subannual timescales. We introduce Lagrangian parcels into a physical-biogeochemical model and release these parcels annually over two decades. For different pathways into, out of, and within NASTMW, we calculate changes in DIC concentrations along the path ( $\Delta$ DIC), distinguishing contributions from vertical mixing and biogeochemical processes. The strongest  $\Delta$ DIC is during subduction of water parcels ( $+101 \mu\text{mol L}^{-1}$  in 1 year), followed by transport out of NASTMW due to increases in density in water parcels ( $+10 \mu\text{mol L}^{-1}$ ). While the mean  $\Delta$ DIC for parcels that persist within NASTMW in 1 year is relatively small at  $+6 \mu\text{mol L}^{-1}$ , this masks underlying dynamics: individual parcels undergo interspersed DIC depletion and enrichment, spanning several timescales and magnitudes. Most DIC enrichment and depletion regimes span timescales of weeks, related to phytoplankton blooms. However, mixing and biogeochemical processes often oppose one another at short timescales, so the largest net DIC changes occur at timescales of more than 30 days. Our new Lagrangian approach complements bulk Eulerian approaches, which average out this underlying complexity, and is relevant to other biogeochemical studies, for example, on marine carbon dioxide removal.

**Plain Language Summary** Mode waters are relatively thick water masses with homogeneous properties, such as temperature and salinity. The North Atlantic subtropical mode water (NASTMW), found in the Sargasso Sea, is one such water mass. Lying underneath the ocean surface, it comes into contact with the atmosphere during winter, when the surface layer is vigorously mixed due to strong winds, causing the mixed layer to connect with NASTMW. This way, NASTMW can buffer atmospheric temperature and carbon anomalies during the summer, when there is no surface connection. It is also a conduit for carbon to penetrate beneath the ocean's upper mixed layer, with the potential to sequester it. We study NASTMW from the viewpoint of a water parcel that moves with the currents and see how carbon concentrations in the water parcels change along different NASTMW pathways. For each pathway, the carbon concentration changes due to an interplay of vertical mixing and biogeochemical processes, for example, related to plankton growth and decay. These processes can unfold over different timescales and may counteract or enhance themselves or one another. The largest change in carbon concentration is found when a parcel moves from the upper ocean mixed layer into NASTMW, mostly due to vertical mixing.

## 1. Introduction

The ocean is an integral component of the natural carbon cycle, as well as a large sink for anthropogenic carbon emissions. Since 1850, it has taken up 26% of anthropogenic  $\text{CO}_2$  from the atmosphere (Friedlingstein et al., 2022). To understand the ocean carbon sink, now and in the future, it is important to understand how the ocean moves carbon from the upper ocean mixed layer through the permanent thermocline, from where it can be further sequestered on timescales of years, decades, or centuries. A major conduit through which this ocean surface-interior exchange occurs is the North Atlantic subtropical mode water (NASTMW). It links the interior to the surface on an annual basis during winter convective events and is responsible for 20% of the carbon uptake by the solubility pump in the 14–50°N latitude band of the North Atlantic (Bates, 2012).

**Writing – review & editing:**Daan Reijnders, Dorothee C. E. Bakker,  
Erik van Sebille

NASTMW, also referred to as Eighteen Degree Water, is a classical example of mode water (Hanawa & Talley, 2001), featuring a thick vertical layer characterized by near-homogeneous properties including temperature, salinity, and oxygen concentration. It has a typical thickness of 200–300 m, located at 300 m depth (Deremble & Dewar, 2013; Worthington, 1958). It is formed during winter, when surface buoyancy loss leads to convection events that deepen the mixed layer in the Sargasso Sea, and through cross-frontal mixing in the southern flanks of the Gulf Stream (Davis et al., 2013; Joyce et al., 2013). Spring stratification caps off NASTMW again, causing it to act as an interannual buffer of wintertime atmospheric anomalies of temperature and carbon (Bates et al., 2002). Gyre circulation and eddy-induced advection allow NASTMW to spread horizontally southwards, causing it to occupy an area much larger than its formation location (Gary et al., 2014). This makes NASTMW also a key regulator of temperature (Sugimoto et al., 2017), organic carbon (Sugimoto et al., 2017), and nutrients (Palter et al., 2005) in the interior of the subtropical gyre. Subsequent destruction of NASTMW occurs primarily through vertical mixing at the top of the layer, but also through diapycnal mixing and along-isopycnal stirring (Billheimer & Talley, 2016).

Current understanding of the role of NASTMW in oceanic carbon uptake is either based on sparse observations (Bates, 2012; Bates et al., 2002; Billheimer et al., 2021) or is inferred from insights into physical mechanisms such as its formation, ventilation and pathways (Davis et al., 2013; Gan et al., 2023; Gary et al., 2014; Kwon et al., 2015; Li et al., 2022). However, a process-based view of how dissolved inorganic carbon (DIC) is transported along pathways from the ocean surface through NASTMW into the ocean interior is lacking.

We investigate how DIC concentrations change along pathways of NASTMW during its formation, persistence, ventilation, and physical export to higher-density water masses to better understand which processes alter carbon concentrations along this conduit between the atmosphere and the ocean interior. To do so, we trace virtual parcels of water along pathways into, out of, and within NASTMW using a coupled physical-biogeochemical, eddy-permitting ocean model. Along the pathways of these flow-following Lagrangian parcels, we disentangle the influence of different vertical mixing and biogeochemical processes on the local DIC concentration. Specifically, we split biogeochemical processes into soft-tissue and carbonate components. We then quantify the timescales and magnitudes of DIC depletion and enrichment regimes, defined between local minima and maxima in DIC anomaly time series. Rather than only looking at the bulk change in DIC concentrations along each pathway, we also consider how these changes are distributed between processes and pathways, as well as in time and between a range of timescales. This allows us to better understand the complexity by which vertical mixing and biogeochemical processes affect the DIC content of NASTMW at different moments and timescales.

We focus on timescales of the order of years and less, as observations and modeling studies show that most NASTMW parcels have residence times shorter than a year (Fratantoni et al., 2013; Gary et al., 2014). We consider parcels that subduct into NASTMW, ventilating parcels, persisting NASTMW parcels, and parcels that are exported due to increases in density. Parcels in this last class are relevant candidates for longer sequestration on timescales of years to decades (the timescale of the gyre interior; Levine et al., 2011).

## 2. Data and Methods

### 2.1. Ocean Model Data

To compute Lagrangian parcel trajectories and along-trajectory DIC changes, we use gridded ocean physics and biogeochemistry output data from a global hindcast ocean model at  $1/4^\circ$  horizontal resolution, comprised of the FREEGLORYS2V4 physics and FREEBIORYS2V4 biogeochemistry products developed by Mercator Ocean International (MOI) for the Copernicus Marine Service. These coupled products have an eddy-permitting resolution, resolving part of the mesoscale eddy regime, which plays a role in mode water formation (Davis et al., 2013; Xu et al., 2014). Ideally, we would use a model set that resolves the full mesoscale, to better represent NASTMW (Gan et al., 2023), or even parts of the submesoscale, as these play important roles in biogeochemical cycles (Lévy et al., 2024). However, an eddy-permitting resolution accommodates the high computational and storage demands from the physical-biogeochemical run (similar to Atkins et al., 2022), and can provide us with a mesoscale process-level understanding. The horizontal resolution of  $1/4^\circ$  is representative of that used in state-of-the-art earth system models (Hewitt et al., 2020), and thus also bears relevance to their dynamics. We use versions of both data products on their native Arakawa C-grid, allowing for more precise Lagrangian trajectory computations (Delandmeter & van Sebille, 2019).

Ocean physics obeys conservation of mass, momentum, and biogeochemical budgets and the hindcast ocean model does not include data assimilation. We use a time series between 1995 and 2017, excluding earlier spin-up years. The length of the time series allows us to take into account interannual variability. Since the model is not constrained by observations after its initialization, it may exhibit drift from observed conditions over time. Thus, we use the model in the context of process understanding rather than precise reproduction of observational data.

Ocean physics in FREEGLORYS2V4 are simulated with NEMO version 3.1 (Madec et al., 2013) with the ORCA025 configuration, having a 22 km horizontal resolution at Cape Hatteras and 75 vertical levels (Bernard et al., 2006). Vertical mixing is parameterized using an adaptation of the turbulent closure model by Blanke and Delecluse (1993). Physics are initialized from the EN4 data product (Good et al., 2013) and atmospheric forcings come from 3-hourly ERA-interim reanalysis products from ECMWF (Dee et al., 2011). FREEGLORYS2V4 has an assimilated counterpart, GLORYS2V4, which is extensively described in Garric and Parent (2017). A comparison of the model with observations is found in Text S1 in Supporting Information S1.

Biogeochemistry in FREEBIORYS2V4 is modeled using the intermediate complexity PISCES-v2 model (Aumont et al., 2015). PISCES simulates the carbon cycle, carbonate chemistry, main nutrients (P, N, Fe, and Si), and the lower trophic levels of marine ecosystems (phytoplankton, microzooplankton, and mesozooplankton) using 24 prognostic variables in total. These tracers are advected and vertically mixed using the hydrodynamics from FREEGLORYS2V4, without horizontal diffusive mixing. Nitrate, phosphate, oxygen, and silicate are initialized using data from the World Ocean Atlas (National Oceanographic Data Center (U.S.) Ocean Climate Laboratory et al., 2002) and DIC and alkalinity are initialized with the GLODAP climatology (Key et al., 2004). The model includes atmospheric deposition and riverine input of Fe, Si, N and P, as well as Fe input from sediment. Although PISCES-v2 imposes a stoichiometric ratio of C:N:P = 122:16:1, cycles of phosphorus and nitrogen are different due to nitrogen fixation, denitrification, and differences in atmospheric deposition of N and P. Atmospheric  $p\text{CO}_2$  is prescribed at the air-sea interface, computed from monthly global  $\text{CO}_2$  mole fractions (Lan et al., 2023). A biogeochemical model verification at the global scale is found Perruche et al. (2019).

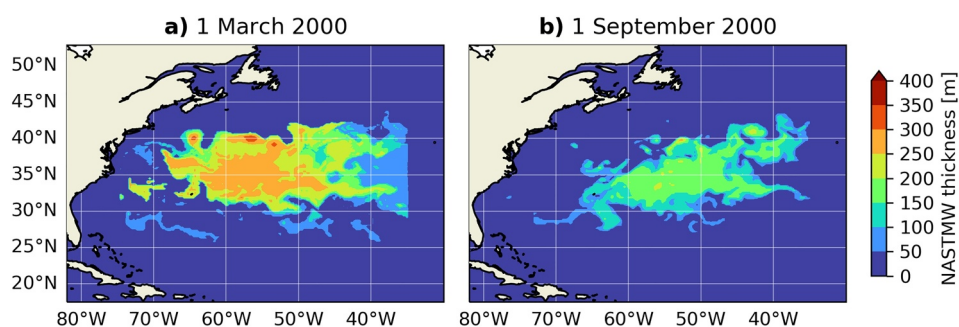
Near the Bermuda Atlantic Time-series Study (BATS) site ( $32^\circ 10' \text{N}$ ,  $64^\circ 10' \text{E}$ ) FREEBIORYS2V4 exhibits a trend of increasing salinity-normalized DIC at 10 m depth, by  $+0.2 \mu\text{mol/L/year}$  (Figure S12 in Supporting Information S1). This is roughly a factor 5 smaller than the observed salinity-normalized DIC trend of  $+1.08 \pm 0.05 \mu\text{mol/kg/year}$  (Bates et al., 2012). Therefore, the input of the biogeochemical model does not accurately represent the observed decadal increase of upper ocean DIC concentrations due to climate change in the Sargasso Sea. We thus only consider the two decades of model data in the context of interannual variability and focus on a process-based understanding of DIC changes along NASTMW pathways. Due to a bias in the model upper ocean salinity trend, the DIC trend at the surface of the Sargasso Sea is mostly between 0 and  $-1 \mu\text{mol/L/year}$  (Text S1 in Supporting Information S1), which is small compared to the high background DIC concentrations of  $\sim 2055 \mu\text{mol L}^{-1}$ .

## 2.2. Definition of NASTMW

NASTMW was first identified by Worthington (1958) as a water mass with a uniform temperature around  $18^\circ\text{C}$ , giving it the moniker Eighteen Degree Water. It is most commonly classified using a temperature range centered around  $18^\circ\text{C}$ , typically  $17\text{--}19^\circ\text{C}$  (Forget et al., 2011; Kwon & Riser, 2004; Maze et al., 2009), with an added stratification constraint that delineates the vertical homogeneity of mode water (Klein & Hogg, 1996; Kwon & Riser, 2004). Alternatively, it is defined through a potential density range with a threshold to delimit low potential vorticity (PV) (Billheimer & Talley, 2016; Talley & Raymer, 1982).

We choose the following constraints for marking Lagrangian parcels as part of NASTMW.

1. Temperature at the location of the parcels is bounded between 17 and  $20.5^\circ\text{C}$ . The upper bound is higher than the typical  $19^\circ\text{C}$ , since the temperature stratification is slightly stronger in the NASTMW region in the model than in observations, due to model biases (see Text S1 in Supporting Information S1), similar to the model study of Gary et al. (2014).
2. The local temperature stratification  $\partial T/\partial z$  is smaller than  $0.01^\circ\text{C m}^{-1}$ . This stratification limit is weaker than the constraint of  $\partial T/\partial z < 0.006^\circ\text{C m}^{-1}$  stratification of Kwon and Riser (2004), but the same as in Gary et al. (2014).
3. Parcels reside in NASTMW layers of at least 50 m thickness, to exclude thin mixed layers



**Figure 1.** Modeled NASTMW thickness snapshots on panel (a) 1 March 2000, and (b) 1 September 2000. Note that Madeira Mode Water, east of 35°W, is excluded.

4. Parcels reside in a contiguous volume of NASTMW of at least  $1 \times 10^{11} \text{ m}^3$ . While this is only on the order of  $10^{-4}$  times the typical winter NASTMW volume, it excludes many small volumes that are shed off from the main NASTMW volume.
5. We only consider NASTMW west of 35°W, to exclude Madeira Mode Water, which has similar properties to NASTMW (Siedler et al., 1987).

Constraints 1–3 are similar to those used in Gary et al. (2014) and Kwon et al. (2015), who also investigate Lagrangian pathways of NASTMW in an ocean model, except that they use a slightly lower temperature upper bound of 20°C. A sensitivity analysis of the NASTMW constraints is found in Text S2 in Supporting Information S1. With the constraints used, we find an average yearly maximum volume of  $9.0 \times 10^{14} \text{ m}^3$ , close to the NASTMW volume of  $9.1 \times 10^{14} \text{ m}^3$  found by Joyce (2012) based on observations (Text S2 in Supporting Information S1). Although the volume of NASTMW exhibits strong seasonal and interannual variability, we find a strong decrease in NASTMW volume starting in 2010, which agrees with the observed decrease in mode water formation found by Stevens et al. (2020).

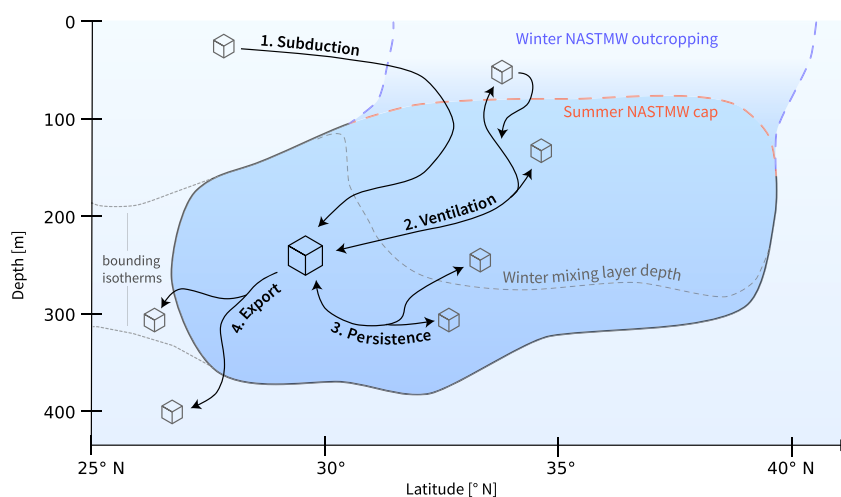
Figure 1 shows March and September snapshots of modeled NASTMW thicknesses defined using the above criteria. The imprint of mesoscale eddies on the NASTMW structure can be clearly observed (Fratantoni et al., 2013; Gary et al., 2014). Due to model biases, the modeled NASTMW has its core located farther eastward with respect to observations (Text S1 in Supporting Information S1), but the modeled NASTMW is used here to gain a process-level understanding of how DIC concentrations change along NASTMW pathways.

### 2.3. Initialization and Simulation of Lagrangian Parcels

To compute DIC changes along Lagrangian pathways, we simulate the movement of virtual Lagrangian parcels using the Parcels Lagrangian framework (Delandmeter & van Sebille, 2019) (version 2.4.1). These Lagrangian parcels have no defined size and behave like point particles that are advected using ocean model output velocities, while tracer concentrations are equal to those of the ambient water. Along the Lagrangian pathways, we sample molar concentrations of DIC and its precomputed vertical mixing flux, as well as alkalinity, nitrate, phosphate, and their mixing fluxes (Section 2.5). We also sample temperature, salinity, mixed and mixing layer depth, and NASTMW criteria (stratification and contiguity criteria) as these help us distinguish the different NASTMW pathways.

We homogeneously initialize parcels in all parts of NASTMW yearly on 1 September between 1995 and 2015, using the criteria of Section 2.2. Parcels are horizontally spaced apart 0.25° in the zonal and meridional directions, matching the horizontal model resolution. Vertically, parcels are released at fixed depths in NASTMW at 30 m intervals starting at 100 m and reaching down to 460 m (the minimum and maximum summer NASTMW depths in the model).

Parcels are advected forward and backward in time: forward simulations serve to investigate ventilating parcels, persisting NASTMW parcels, and parcels that are exported due to increases in water density. Backward simulations allow us to investigate which parcels have subducted from the mixed layer since the previous summer. Simulations use time steps of  $\Delta t = 90 \text{ min}$ . For maximum velocities of the order  $\sim 1 \text{ m s}^{-1}$  and a nominal grid resolution of 20 km, this is well below the limit of  $\Delta t = \Delta x/U = 6 \text{ hr}$  during which a parcel may travel distances at



**Figure 2.** Sketch of the four Lagrangian pathways in, within, and out of NASTMW as covered in this study in latitude-depth space. NASTMW is indicated by the dark blue blob. Actual NASTMW boundaries and outcropping locations also exhibit longitudinal, seasonal, and interannual variation.

the grid scale. Parcels are simulated for 3 years, although for most of the analysis in this study, we use only the first year of integration data. Parcel locations and biogeochemical concentrations are saved at daily intervals. In total, we simulate a total of  $2 \times 861,164$  trajectories ( $2 \times 20,504 \pm 6,487$  per year, depending on the NASTMW volume), with the factor 2 indicating forward and backward trajectories. The parcel spacing and temporal output are chosen to balance statistical accuracy with the large computational and storage demands from sampling many biogeochemical fields and identifying individual DIC enrichment and depletion regimes (see Section 2.6).

Parcel trajectories are computed without adding any stochastic displacements that simulate vertical mixing or subgrid-scale isoneutral dispersion (Reijnders et al., 2022). Instead, the parcels represent the (grid-scale) mean flow. We can then see how subgrid-scale vertical mixing fluxes, which are sampled at parcel locations, influence carbon concentrations at the larger grid-scale.

#### 2.4. NASTMW Pathway Definition

Parcels may enter and exit NASTMW at infinite points in space and time. We delineate four specific pathways into, within, and out of NASTMW that are typical to its life cycle. Rather than accounting for all possible NASTMW pathways, our study focuses on DIC transformations along these characteristic pathways, acknowledging their potential overlap and non-exhaustiveness. To determine which pathway a parcel follows, we use the daily output snapshots of the parcel trajectory computation. We restrict ourselves to pathways starting on 1 September, as this date coincides with a low NASTMW volume and ensures that the NASTMW maximum in March occurs midway through our simulations. Figure 2 shows the four pathways used in this study. They are defined as follows.

1. *Subduction*: Parcels were in the mixed layer on 1 September in the previous year and end up in NASTMW on the following 1 September. Here, the mixed layer in NEMO is defined as the layer where the temperature is within  $0.2^\circ\text{C}$  of the temperature at 10 m depth. We use the mixed layer rather than the mixing layer (Brainerd & Gregg, 1995) since it is sufficient that a parcel has recently been mixed in summer. Relatively few parcels are expected to subduct on timescales of a year. However, using a longer time scale allows parcels to travel larger horizontal distances, thus widening the domain of parcel origin, possibly far beyond the NASTMW formation region. We opt for specifically investigating short subduction time scales of 1 year in order to keep the parcel origin close to the NASTMW region. Text S3 in Supporting Information S1 discusses results using longer subduction timescales of two and 3 years.
2. *Persistence*: Parcels persist in NASTMW throughout the year until next September. If a parcel temporarily exits the NASTMW—for instance, for a duration shorter than the interval between two consecutive daily snapshots—and then re-enters, it is still considered to have persisted, provided it is in NASTMW at all daily snapshots.

3. *Ventilation*: Parcels from September NASTMW at one point reach the mixing layer, defined by the turbocline depth, and are present in NASTMW again next September. The turbocline depth in NEMO is computed by a transition in vertical mixing regimes, where the vertical eddy diffusivity drops below a predefined threshold (Madec et al., 2013). Air-sea heat and carbon fluxes act in the model's upper layer and propagate by vertical mixing throughout the mixing layer. Note that the mixing layer can partially overlap with NASTMW. A portion of persisting NASTMW parcels may thus ventilate as well, meaning parcels may be double-counted.
4. *Export*: Parcels leave NASTMW and acquire a potential density that is higher than their last value within NASTMW ( $\sigma > \sigma_{\text{NASTMW}}$ ). Leaving NASTMW can thus also be the result of not meeting the stratification criterion anymore when NASTMW is destroyed. We are particularly interested in parcels that persistently maintain their higher densities for a full year, to exclude parcels that only densify temporarily. Since not all parcels will densify immediately when the simulation starts, we here require that parcels have been densified out of NASTMW for at least a continuous year, 2 years after their initialization. We view these parcels as candidates for sequestration since they represent previous NASTMW parcels that are transformed and exported to higher-density waters. When parcels leave NASTMW, their densities may undergo slightly negative fluctuations. We relax the criterion slightly to allow for this:  $\sigma > \sigma_{\text{NASTMW}} - \Delta\sigma$ , with  $\Delta\sigma = 0.01 \text{ kg m}^{-3}$ .  $\sigma$  is computed using TEOS-10 (McDougall & Barker, 2011). We discuss variations of  $\Delta\sigma$  in Text S4 in Supporting Information S1.

Note that we focus on the total, time-integrated, change in DIC along a Lagrangian pathway, indicated by  $\Delta\text{DIC}$ , and on timescale distributions of DIC concentration changes along these pathways. The Lagrangian pathways of NASTMW parcels have already been extensively described from a physical perspective by Gary et al. (2014) and Kwon et al. (2015).

As mentioned, the above four pathways are not exhaustive. For example, between consecutive summers a parcel may temporarily leave NASTMW for a few days without reaching the mixing layer. Such a parcel would not fall into any of the above categories. Other examples are parcels that densify but do not remain denser than their NASTMW exit density for a full year or parcels that subduct over timescales longer than 1 year. However, the clear definitions of the four pathways in this study helps create a process-based understanding of carbon fluctuations throughout the life cycle of NASTMW.

## 2.5. Disentangling DIC Changes

The total change in DIC concentrations along a Lagrangian trajectory can be decomposed as follows:

$$\underbrace{\frac{\partial[\text{DIC}]}{\partial t} + \mathbf{u} \cdot \nabla[\text{DIC}]}_{\text{total}} = \frac{\partial[\text{DIC}]}{\partial t}_{\text{mixing}} + \frac{D[\text{DIC}]}{Dt}_{\text{bio}} + \frac{\partial[\text{DIC}]}{\partial t}_{\text{air-sea}} + \frac{\partial[\text{DIC}]}{\partial t}_{\text{residual}}. \quad (1)$$

Here, the left-hand side is the Lagrangian or total derivative of DIC along the pathway,  $\frac{D[\text{DIC}]}{Dt}$ . [DIC] in this study is expressed as a molar concentration of DIC, with units  $\mu\text{mol L}^{-1}$ , so that seawater density changes do not affect DIC concentrations in a control volume. The Lagrangian derivative evolves due to vertical mixing into and out of the water parcel, along-trajectory biogeochemical sources and sinks (indicated by a Lagrangian derivative), air-sea exchange (only in the surface layer), and residual terms.

The vertical mixing fluxes are computed from the model output vertical diffusivity coefficient  $k_z$  and vertical gradients in DIC:

$$\frac{\partial[\text{DIC}]}{\partial t}_{\text{mixing}} = \partial_z(k_z \partial_z[\text{DIC}]). \quad (2)$$

We compute these as daily Eulerian fields and sample them along Lagrangian pathways. Because the model includes a horizontal diffusive mixing parameterization only for temperature and salinity, but not for biogeochemical tracers, we do not include a horizontal mixing term.

Not all PISCES state variables are stored as output in FREEBIORYS2V4: only chlorophyll, nitrate, phosphate, silicate, DIC, total alkalinity, and dissolved oxygen are available. Therefore, we need to approximate the

biogeochemical sources and sinks from the available variables. We follow Sarmiento and Gruber (2006) and compute the biogeochemical term as

$$\frac{D[\text{DIC}]}{Dt}_{\text{bio}} = \underbrace{r_{C:P} \frac{D[\text{PO}_4^{3-}]}{Dt}_{\text{bio}}}_{\text{soft-tissue}} + \underbrace{\frac{1}{2} \left( \frac{D[\text{TA}]}{Dt}_{\text{bio}} + \frac{D[\text{NO}_3^-]}{Dt}_{\text{bio}} \right)}_{\text{carbonate}}. \quad (3)$$

Here, the first term on the right-hand side corresponds to soft-tissue production and remineralization. These values are estimated from changes in phosphate concentrations, with  $r_{C:P}$  being the stoichiometric ratio of carbon to phosphorus in PISCES. The second term estimates changes in DIC due to calcite formation and dissolution from changes in total alkalinity, correcting for changes in total alkalinity due to changes in nitrate originating from soft-tissue processes (Brewer et al., 1975). The right-hand side of Equation 3 again consists of Lagrangian derivatives. Note that vertical mixing can also increase or decrease concentrations of phosphate, alkalinity, and nitrate along a Lagrangian trajectory. Rather than a biogeochemical effect, this is a physical effect on the DIC concentrations, as already captured in the mixing term in Equation 1. The Lagrangian derivatives of the tracers in Equation 3 are therefore calculated by subtracting their precomputed diffusive mixing fluxes from the total along-trajectory change in tracer concentrations, such that biogeochemical effects are isolated. For example:

$$\frac{D[\text{PO}_4^{3-}]}{Dt}_{\text{bio}} = \frac{D[\text{PO}_4^{3-}]}{Dt} - \partial_z(k_z \partial_z [\text{PO}_4^{3-}]), \quad (4)$$

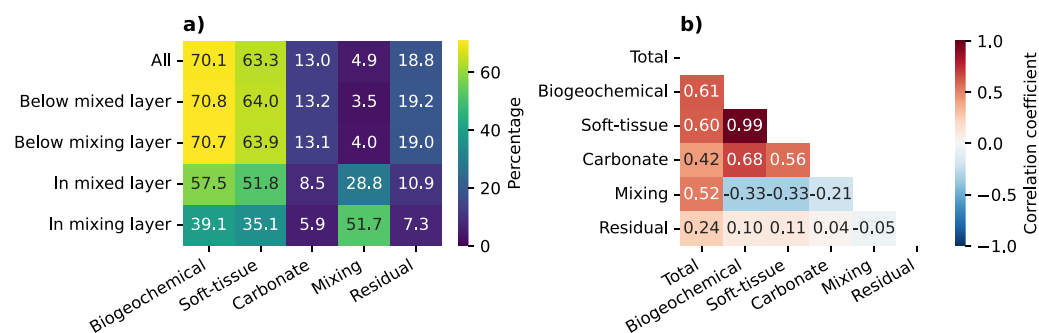
with similar equations for total alkalinity and nitrate.

Explicit air-sea exchange in the ocean model occurs only in the uppermost layer (1 m). Changing DIC concentrations in this uppermost layer will influence the concentrations below by vertical diffusive mixing, as in Equation 2. In our Lagrangian simulations, parcels generally do not reach the uppermost layer: no parcels do so when simulated forward in time, and an annual average of 0.027% does so backward in time. This means that parcels do not experience explicit air-sea exchange. Instead, air-sea exchange only indirectly affects parcel DIC concentrations through strong diffusive mixing in the mixing layer. The air-sea exchange term from Equation 1 in our analysis thus becomes part of the vertical mixing term and is not treated separately. We also cannot differentiate between natural DIC and anthropogenic carbon ( $C_{\text{amt}}$ ; Gruber et al., 1996) since it is not included as a separate tracer in FREEBIORYS2V4.

The residual term captures changes in DIC concentrations that cannot be accounted for by the mixing and biogeochemical terms in Equation 1. We compute it by subtracting the biogeochemical and vertical mixing terms in Equation 1 from the total DIC derivative along the trajectory. The residual contains the discrepancies between the biogeochemical DIC term computed from Equation 3 and the actual biogeochemical contribution as it occurs in PISCES. For the very few parcels that reach the upper model level, missing air-sea exchange will be captured by the residual. It also accounts for unconstrained numerical mixing of DIC and other biogeochemical state variables. Atmospheric and riverine deposition of phosphorus and nitrogen are neglected when computing their biogeochemical changes, thus also leaving an imprint on the residual. We cannot isolate the effects of local freshening or evaporation along Lagrangian parcel trajectories, because these terms cannot be constrained: usually, these can be estimated from salinity, but salinity is explicitly horizontally mixed, unlike biogeochemical tracers. Thus, we do not normalize DIC by local salinity in our analysis because horizontal mixing of salinity would cause a drift in the budget over time. In addition, we are explicitly interested in the effect of vertical mixing on DIC concentrations. Evaporation- and precipitation-related freshening directly impact nutrient concentrations only in the model surface layer. Below the first meter, the effect of mixing of fresher and more saline waters on DIC concentrations is part of the mixing term (Equation 2).

With the implicit treatment of air-sea exchange in the vertical mixing flux, and with the division of biogeochemical contributions into a soft-tissue term and a carbonate term, the total DIC derivative is then decomposed as:

$$\frac{D[\text{DIC}]}{Dt}_{\text{total}} = \frac{\partial[\text{DIC}]}{\partial t}_{\text{mixing}} + \frac{D[\text{DIC}]}{Dt}_{\text{soft-tissue}} + \frac{D[\text{DIC}]}{Dt}_{\text{carbonate}} + \frac{\partial[\text{DIC}]}{\partial t}_{\text{residual}}. \quad (5)$$



**Figure 3.** (a) Percentage at which each term in Equation 5 contributes to the sum of their magnitudes, averaged over each time step. Percentages are computed using forward trajectories in all years, selecting only the time steps for which the total rate of change is responsible for at least 95% of the sum of all total magnitudes. We also examine the total biogeochemical rate of change, composed of soft-tissue and carbonate terms, which may have opposite signs. (b) Correlations between each of the terms, including the total derivative  $\frac{D[DIC]}{Dt}$ .

To obtain an illustrative comparison of the contribution of each term to  $\frac{D[DIC]}{Dt}$ , we compute the sum of the magnitudes of each component in the right-hand side Equation 5 for each trajectory. Figure 3a shows the percentage by which each component contributes to the sum of their magnitudes, computed from forward-in-time 1-year trajectories from all years (30-day segments of disentangled time series in the year 2000 are found in Figure S35 in Supporting Information S1). Note that the net biogeochemical contribution may be lower than the sum of its constituents, as these may have opposite signs. We aim to discern the significance of each term in determining the  $\Delta DIC$  across entire trajectories. To achieve this, we exclude time steps that cumulatively account for less than 5% of the sum of magnitudes, thereby focusing on the time steps for which the total rate of change predominantly influences  $\Delta DIC$ . This method effectively screens out instances with minimal  $\frac{D[DIC]}{Dt}$  values, since these are susceptible to disproportionate impacts from numerical inaccuracies, thus distorting the residual's impact. The residual accounts for about 19% of the sum of magnitudes of each term, which per timestep is higher than the contribution of the mixing and carbonate terms. However, our main analysis will show that the residual will fluctuate in sign between timesteps and trajectories, such that its overall influence is limited. Figure 3a shows that biogeochemical terms are the dominant contributor to the total rate of change at each time step, with soft-tissue processes in turn being the main constituent. As expected, mixing fluxes become increasingly important in the mixing layer, where the contribution is twice as high as in the mixed layer and 13 times higher than below the mixing layer. Carbonate terms are roughly six times smaller than soft-tissue terms.

Because the residual term is composed of multiple unconstrained constituents (see above), we computed correlations between the residual term and other terms. This can shed light on whether the residual is systematically linked to one of the other processes. Figure 3b shows that the residual is uncorrelated with the other constituents, meaning none of these are systematically over- or underestimated. There is a weak correlation between the total DIC rate of change and the residual, which, as discussed earlier, could be related to some unconstrained process that is missing in the budget. We note that the soft-tissue contribution has a very high correlation with the total biogeochemical term, meaning that it almost always dominates this term. The mixing term more often than not is of the opposite sign as the biogeochemical terms, indicating net counteraction.

For each water parcel trajectory, we use the disentangled rates of change to reconstruct time series of DIC anomalies with respect to the initial concentration for soft-tissue processes, carbonate processes, vertical mixing, and residual processes.

## 2.6. Identifying Enrichment and Depletion Regimes and Timescales

One of our aims is to investigate the timescales and strengths at which DIC concentrations are depleted or enriched along NASTMW pathways. We examine both the cumulative  $\Delta DIC$  along the pathway and intermittent DIC enrichment and depletion regimes affecting DIC concentrations.

We have opted for a straightforward approach to define DIC enrichment and depletion regimes. Specifically, these regimes are defined by the intervals in the time series between local minima, which indicate the start of enrichment, and local maxima, which indicate the start of depletion. Thus, the duration of regimes corresponds to



**Table 1**  
*Yearly Mean  $\Delta$ DIC for Each Pathway in the Hindcast Model, Including Mean Occurrences*

Pathway	$\Delta$ DIC in model [ $\mu\text{mol L}^{-1}$ ]	Average % of parcels in one simulation (%)
1. Subduction	100.8	1.2 <sup>a</sup>
2. Persistence	6.0	25.9
3. Ventilation	0.7	9.1
4. Export	9.9 <sup>b</sup>	15.3

<sup>a</sup>This percentage increases if we consider long timescales for subduction, with the associated  $\Delta$ DIC still having a similar magnitude ( $110 \mu\text{mol L}^{-1}$  if subduction occurs over 2 or 3 years; see Section 3.1). <sup>b</sup>DIC changes mostly occur before the parcel is exported (Section 3.4).

the time intervals between these local minima and maxima, whereas the regime's magnitude is the change in DIC concentration during these intervals. In our analyses, we do not truncate regimes that have their start date before the pathway's end date: we analyze trajectories from 1 September till 1 September in the subsequent year (or 2 years, in case of export), but if a regime starts before this end date, we still include its entire timescale in our analysis.

To reduce the impact of minor fluctuations occurring over short periods (a few days or less), we apply a centered moving average to the time series after its disentanglement into constituent terms. Although this approach smooths the series, it does not completely eliminate short-time variability. Instead, it emphasizes significant changes in DIC concentration, minimizing the influence of brief, minor fluctuations at time scales shorter than the window size. Therefore, the window size partially sets the scale for which regimes are deemed significant.

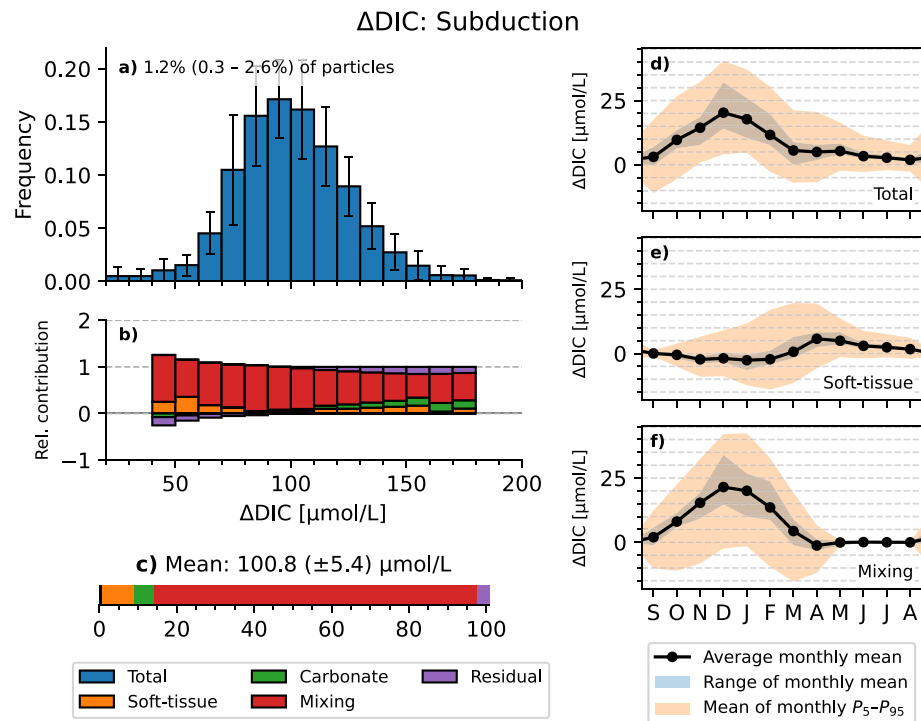
The primary advantage of this methodology lies in its simplicity, offering a clear lens to assess the main dynamics of DIC variations over time. Given our model's nominal resolution of  $1/4^\circ$ , it does not resolve the submesoscale, which is associated with nutrient transport and biogeochemical structuring at timescales of the order of days (Lévy et al., 2012). Instead, we will apply a window length of 10 days, which is still much shorter than the lifetimes of mesoscale eddies (months) by which nutrients are supplied (McGillicuddy et al., 1998), and instead is of the same order as typical remineralization timescales (Siegel et al., 1999). This allows us to resolve processes on timescales of the order of a week and higher. Additionally, Text S5 in Supporting Information S1 repeats our analysis without any smoothing, and with smoothing using window sizes of 6 and 20 days. Especially when no smoothing is applied, the bulk of the regime lengths are shorter than 10 days, while their magnitudes are also much smaller. This illustrates the need for smoothing to shed light on processes at longer timescales.

### 3. Results: DIC Enrichment and Depletion Along NASTMW Pathways

Table 1 summarizes the mean  $\Delta$ DIC for each pathway, averaged over all years, and the mean fraction of parcels that follow each pathway. This shows that parcels undergo the largest change in DIC while subducting from the mixed layer over the course of a year, while at the same time, only 1.2% of parcels make up this pathway. Forward in time, the most prominent pathway is persistence, accounting for 25.9% of the trajectories, followed by export and ventilation. Since the  $\Delta$ DIC does not follow a normal distribution, we do not include statistics of variance in Table 1. Instead, these distributions are provided and discussed directly in the following subsections.

The above pathways are non-exhaustive and non-exclusive (Section 2.4), but the trajectories that are not accounted for can follow a myriad of paths, hindering their analysis. For comparison, Text S6 in Supporting Information S1 gives a brief overview of the total  $\Delta$ DIC and timescale distributions for all trajectories emanating from NASTMW in the forward and backward simulations. In summary, for all trajectories starting in the mode water,  $\Delta$ DIC =  $5.4 \mu\text{mol L}^{-1}$  over the following year, while for all trajectories that ended up in the mode water,  $\Delta$ DIC =  $4.3 \mu\text{mol L}^{-1}$  over the previous year.

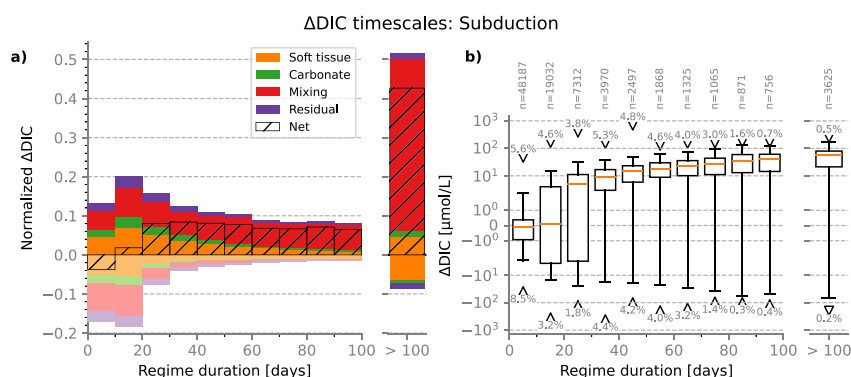
Each pathway is discussed individually in the following subsections. We plot the distribution of total  $\Delta$ DIC and show the relative contribution of biogeochemical, mixing, and residual processes for different total  $\Delta$ DIC magnitudes. The integrated monthly strength of each process is also discussed. Lastly, we examine distributions of enrichment and depletion events spread across timescales and processes.



**Figure 4.** Transformation of DIC concentrations along pathways of parcels that subduct and reach NASTMW. (a) Distribution of total  $\Delta\text{DIC}$  per trajectory for all initialization years 1995–2015. Error bars indicate standard deviation for each bin per year. The average number of trajectories of this pathway is indicated as a percentage of all simulated trajectories per year, with min-max ranges indicated in brackets. (b) Relative contribution of each process to the average  $\Delta\text{DIC}$ , for different  $\Delta\text{DIC}$  strengths. The sum of contributions is always 1, meaning that contributions greater than 1 are balanced by contributions of the opposite sign. The relative contribution is computed only for bins with their edges between the 1st and 99th percentile of  $\Delta\text{DIC}$ . (c) Mean of yearly average  $\Delta\text{DIC}$  of trajectories, with the standard deviation across years in brackets. (d–f) Trajectory statistics per month, averaged across the different years for the total DIC rate of change (d), soft-tissue processes (e), and mixing fluxes (f). The black lines show the monthly integrated DIC change, averaged over trajectories and the orange shading the 5th and 95th trajectories percentiles. These trajectory statistics are averaged over the different years. The blue shading show the inter-annual range of the mean monthly integrated DIC changes (black line). Carbonate and residual terms are much smaller and are shown in Figures S40a and S40b in Supporting Information S1.

### 3.1. The Subduction Pathway

As can be seen from Figure 4, subduction of parcels into NASTMW has a large impact on DIC concentrations in the water parcels: the mean increase is  $\sim 100 \mu\text{mol L}^{-1}$ , though with a large spread for different parcels (Figure 4a). The dominant contribution comes from vertical mixing, which acts chiefly when the parcel is in the mixing layer. The mixing contribution grows from September until December, after which it decreases to near-zero around May, where it remains steady for the rest of the year (Figure 4f). This increased mixing coincides with increased downwelling (not shown): upon initialization, parcels experience downwelling at a mean rate of 0.1 m per day in September, increasing steadily to a maximum of approximately 1 m per day in March, after which downwelling velocities reduce again to 0.1 m per day in May. The strength of the vertical mixing flux is then proportional to the downwelling rate and the vertical gradient at the depth of the parcel (Figure S9 in Supporting Information S1). Most parcels exit the mixed layer in April when the mixing layer shoals again and mixing decreases drastically. In the winter months, when the mixing layer deepens and entrains nutrients, there is a small negative soft-tissue carbon contribution from primary productivity (Figure 4e). Although the spring bloom is visible as a minimum in the mean yearly fifth percentile, subducting NASTMW parcels experience a mean increase in DIC in April, as they move below the mixing layer again. Remineralization continues over the course of the following months, as subducting NASTMW is rich in semi-labile dissolved organic carbon that can be remineralized (Carlson et al., 1994; Kr meur et al., 2009).



**Figure 5.**  $\Delta$ DIC contribution of each timescale for parcels that subduct and reach NASTMW. (a) Relative  $\Delta$ DIC of regimes of each timescale. This quantity is computed by summing the magnitudes of each positive and negative regime for all trajectories across years and then normalizing by the sum of  $\Delta$ DIC of each whole trajectory. “Net” shows the positive minus negative normalized  $\Delta$ DIC. Because the distribution has a long tail, regimes longer than 100 days are grouped together. (b) Boxplot of  $\Delta$ DIC magnitudes for each regime for each timescale. Maxima and minima of outliers are indicated by triangles. The number of positive and negative outliers is indicated as a percentage of the total number of regimes, which is indicated above. The boxplot follows the classical definition: whiskers are defined as  $Q_1 - 1.5 \cdot \text{IQR}$  and  $Q_3 + 1.5 \cdot \text{IQR}$ . Outliers are defined as regimes with magnitudes that fall outside the whisker ranges.

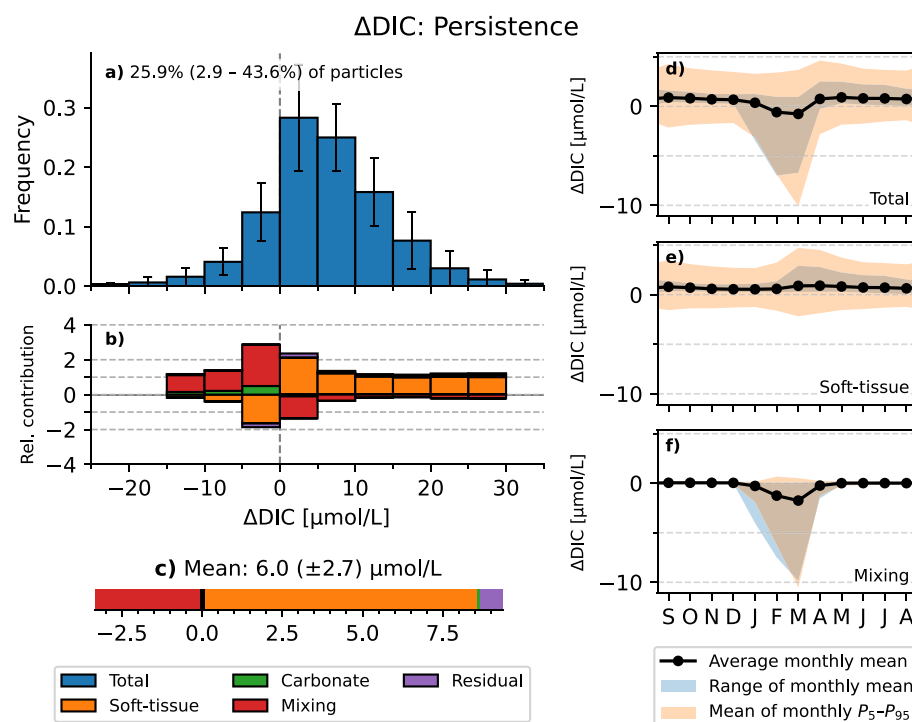
We investigate the timescales and magnitudes associated with the enrichment and depletion regimes in Figure 5. Vertical mixing is the dominant contributor across regime timescales (Figure 5a). Only at timescales of 10 days or less, the net  $\Delta$ DIC is slightly negative. DIC depletion regimes at timescales of 30 days or less primarily occur around March (not shown), during peak primary production. The regime distribution has a long positive tail with around 43% of DIC changes associated with timescales of more than 100 days, mostly associated with vertical mixing. When regime detection is applied specifically to the mixing-related DIC anomaly time series, almost 90% of the  $\Delta$ DIC is associated with regimes with these long timescales (Figure S41 in Supporting Information S1). This shows that vertical mixing steadily increases DIC concentrations as parcels subduct into NASTMW, adjusting to the ambient vertical DIC distribution, with larger DIC concentrations at depth that can supply the parcel with DIC from below (Figure S9 in Supporting Information S1).

While the soft-tissue, carbonate, and residual terms have a relatively minor contribution to the total  $\Delta$ DIC (Figure 4c), their contributions are of similar order to the total  $\Delta$ DIC of the other pathways (shown later). The residual and carbonate processes here exhibit the largest contribution (and spread) when parcels are in the mixing layer (Figures 36a and S36b in Supporting Information S1).

A yearly average of 1.2% of backtracked parcels originate from the mixed layer on the previous September 1st. We also investigated subduction occurring over two and three years. As this allows parcels to subduct over longer timescales, more parcels meet this criterion (3.7% and 5.8% respectively). This is discussed in Text S3 in Supporting Information S1. In summary, these parcels on average experience a total  $\Delta$ DIC of similar order ( $110 \mu\text{mol L}^{-1}$  in both cases; see Figures S13 and S15 in Supporting Information S1). While vertical mixing is still the dominant contributor in both cases, soft-tissue processes progressively make up a higher share of the mean total  $\Delta$ DIC: for subduction over 1 year, these make up 9% of  $\Delta$ DIC, with this contribution increasing to 20% and 30% when subduction occurs over 2 and 3 years, respectively. These soft-tissue contributions are an important factor in shaping the vertical distribution of DIC (Sarmiento & Gruber, 2006). The longer a parcel takes to subduct, the more time soft-tissue remineralization processes have to directly increase the parcel's DIC, whereas during quick subduction the parcel will instead adapt its DIC to ambient conditions through mixing.

### 3.2. The Persistence Pathway

Figure 6 shows the total transformation of DIC concentrations within parcels that persist in NASTMW throughout a full year. On average, this accounts for 25.9% of all parcels and thus agrees with the model study of Gary et al. (2014), where 74% of NASTMW parcels exit the mode water within a year. Note, however, the large interannual range of parcels that comprise this pathway (Figure 6a). The minimum of 2.9% is associated with parcels initialized in September 2013, where the following year 2014 marked a strong decline in the modeled



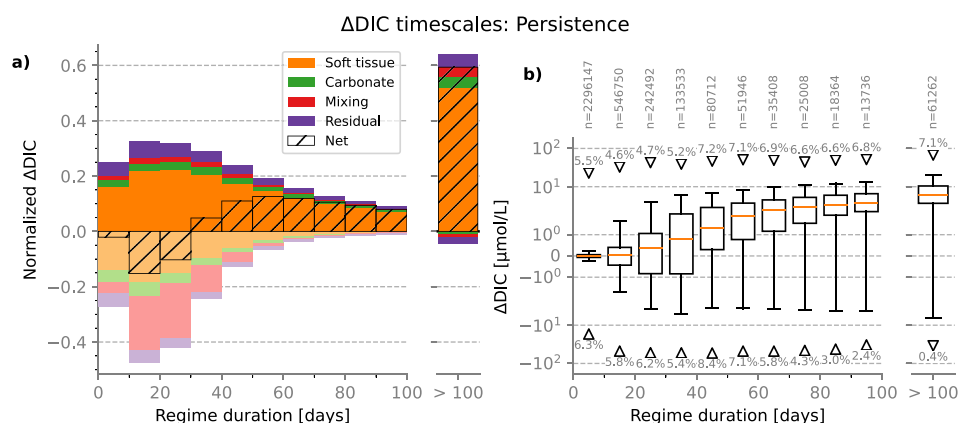
**Figure 6.** Similar to Figure 4, but for parcels that persistently remain in NASTMW. (a) Distribution of total  $\Delta\text{DIC}$  per trajectory, averaged over initialization years 1995–2015. (b) Relative contribution of each process to the average  $\Delta\text{DIC}$ , for different  $\Delta\text{DIC}$  strengths. Note that when the average  $\Delta\text{DIC}$  is negative, positive contributions to  $\Delta\text{DIC}$  (e.g., soft-tissue remineralization) have a negative relative contribution. (c) Mean of yearly average  $\Delta\text{DIC}$  of all trajectories. (d–f) Trajectory statistics per month, averaged across the different years for the total DIC rate of change (d), soft-tissue processes (e), and mixing fluxes (f). Carbonate and residual terms are much smaller and are shown in Figures S40c and S40d in Supporting Information S1.

NASTMW volume toward its minimum in the summer of 2014 (Figure S14 in Supporting Information S1). Interannual variability in NASTMW formation and volume is commonly observed (Billheimer & Talley, 2013; Stevens et al., 2020). Generally, we find that the percentage of parcels that persist in NASTMW is correlated with the volume in the next year, with a Pearson-R of 0.88 ( $p < 0.001$ ); fewer parcels can persist in NASTMW if its volume shrinks from 1 year to the next.

Figure 6b shows that positive contributions are dominated by soft-tissue remineralization, which has a slightly positive monthly mean contribution year-round (Figure 6e). Vertical mixing leaves a distinctly negative imprint on the  $\Delta\text{DIC}$  of persisting NASTMW parcels, meaning that it depletes parcels of carbon. This occurs specifically in winter (Figure 6f), when the mixing layer deepens, and causes 19% of parcels to have a negative  $\Delta\text{DIC}$ . Because winter mixing is a primary driver of NASTMW formation, some parcels that persist in NASTMW may in fact reside in well-mixed newly formed NASTMW. Vertical mixing can then act to deplete DIC from these parcels as it is supplied to the euphotic zone. We find that the vertical displacement of a parcel is a predictor for the total  $\Delta\text{DIC}$  (Pearson-R of 0.51,  $p < 0.001$ ): parcels that move deeper, are more likely to have increased DIC concentrations. This can be due to a smaller likelihood of being temporarily entrained in NASTMW regions that are in contact with the mixing layer.

While the net residual term is smaller than the soft-tissue and mixing terms, the carbonate term is smaller than these residual terms, so we neglect it in our discussion for this pathway. Both the carbonate and residual terms show no clear yearly cycle (Figures S40c and S40d in Supporting Information S1).

From Figure 7 we see that net depletion is associated with timescales of 30 days and less. For timescales between 10 and 30 days, about half of the depletion is attributed to vertical mixing. This is largely associated with the winter convection. The contribution of photosynthesis, a soft-tissue process, has its mode at the 10–20 days



**Figure 7.** ΔDIC contribution of each timescale for persisting NASTMW parcels. (a) Relative ΔDIC of regimes of each timescale. (b) Boxplot of magnitudes of each regime for each timescale.

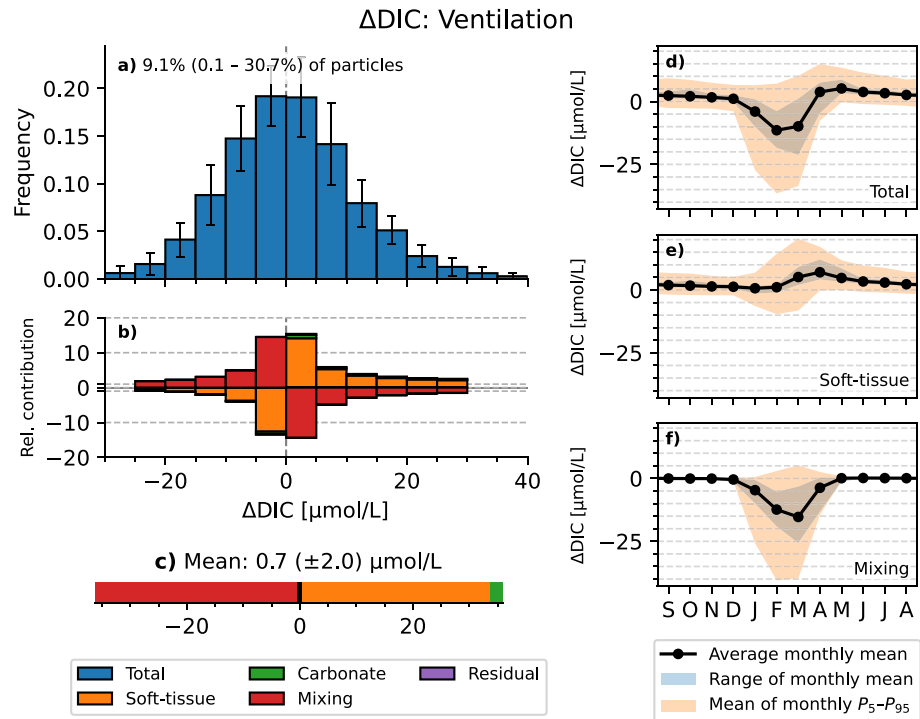
timescale. The associated timescales of the order of weeks correspond to observations of the spring bloom in the Sargasso Sea (Nelson et al., 2004).

Soft-tissue DIC enrichment, associated with remineralization, has its mode at the 20–30 days timescale, but its tail extends over longer timescales than DIC depletion, with a contribution of almost half the total net ΔDIC at timescales longer than 100 days (see the timescales associated with the soft-tissue DIC anomaly, Figure S42 in Supporting Information S1). Figure 7b shows that for timescales less than 20 days, the mode ΔDIC of each individual regime is close to zero at timescales less than 20 days and gradually increases to  $6.2 \mu\text{mol L}^{-1}$  for timescales longer than 100 days. The net negative ΔDIC at timescales less than 30 days then suggests that strongly negative “outliers” are responsible for a net decrease at this timescale. For regimes with durations of around a month, we find that these outliers are largely concentrated around March, coinciding with the spring bloom. The spring bloom can thus be linked to strong anomalous DIC depletion for parcels residing in NASTMW.

### 3.3. The Ventilation Pathway

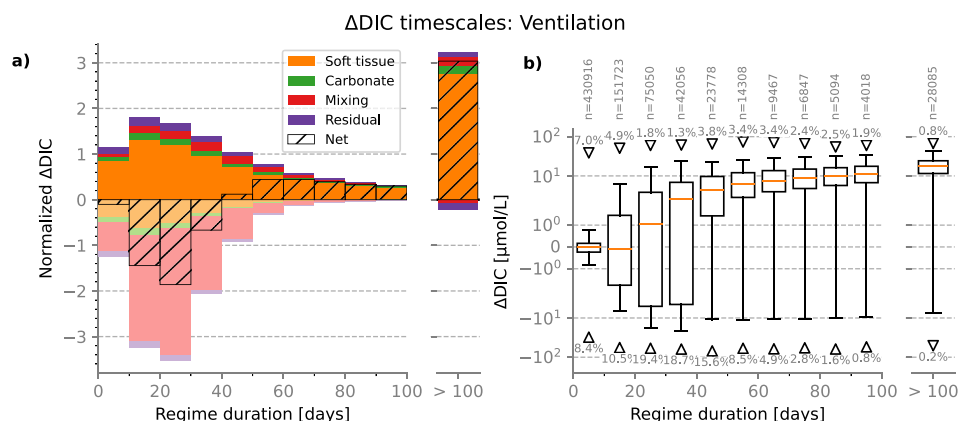
On average, parcels that ventilate by temporarily reaching the mixing layer undergo a negligible net ΔDIC (Figure 8). The mean total ΔDIC of  $0.7 \mu\text{mol L}^{-1}$  is smaller than the interannual standard deviation. On aggregate, this means that the ventilation of existing NASTMW parcels does not influence the NASTMW carbon content appreciably. However, the ΔDIC distribution for individual trajectories in Figure 8a shows a wide spread between positive and negative values. We find that the total ΔDIC along this pathway is correlated with the net downward displacement in the water column with a Pearson-R of 0.60 ( $p < 0.001$ ). Thus, over one yearly ventilation cycle, the net deepening of a parcel is a predictor of its increase in DIC.

Figures 8b and 8c show a strong counteraction of DIC enrichment from soft-tissue remineralization and a negative contribution for vertical mixing. Figure 8f shows how winter mixing is responsible for the decrease in DIC, as the parcel exchanges its DIC with the mixing layer, supplying nutrients for primary production in the euphotic zone, as well as equilibrating with the upper layer in which air-sea fluxes allow for atmospheric gas exchange. Although the mean monthly soft-tissue term never becomes negative, the mean 5th percentile has a minimum around February and March. This coincides with a modeled maximum in net primary production of phytoplankton, associated with the spring bloom. Only some parcels experience this negative soft-tissue contribution directly, as not all parcels can reach the euphotic zone where primary production occurs. Instead, many parcels are linked to the spring bloom indirectly, supplying it with nutrients from the deeper parts of the mixing layer. Following this, the mean soft-tissue term has a slight positive maximum in April (Figure 8e), as the mixing layer shoals and moves above the parcel, allowing organic carbon to remineralize. The net DIC term remains positive over the following months (Figures 8d and 8e). Carbonate processes have a small positive yearly contribution, also peaking in April, after most parcels have left the mixing layer (Figure S22e in Supporting Information S1). Note that residual processes have no net effect on the ΔDIC for this pathway since they effectively cancel each other out (Figure 9a and Figure S40f in Supporting Information S1).

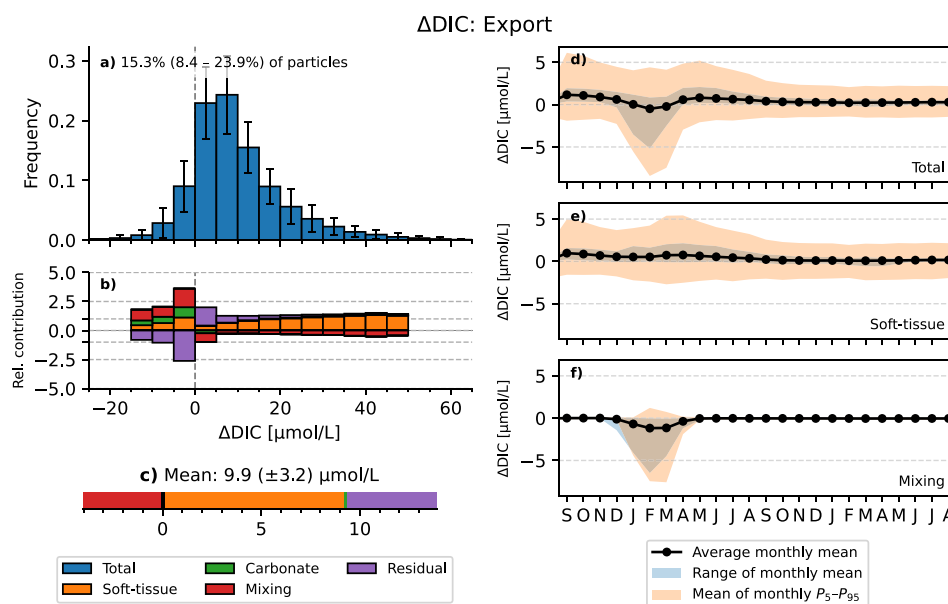


**Figure 8.** Similar to Figure 4, but for ventilating NASTMW parcels. (a) Distribution of total  $\Delta\text{DIC}$  per trajectory, averaged over initialization years 1995–2015. (b) Relative contribution of each process to the average  $\Delta\text{DIC}$ , for different  $\Delta\text{DIC}$  strengths. (c) Mean of yearly average  $\Delta\text{DIC}$  of all trajectories. (d–f) Trajectory statistics per month, averaged across the different years for the total DIC rate of change (d), soft-tissue processes (e), and mixing fluxes (f). Carbonate and residual terms are much smaller and are shown in Figures S40e and S40f in Supporting Information S1.

Mixing is the main contributor to the net depletion of DIC at timescales shorter than 40 days (Figure 9a). The distribution of DIC enrichment and depletion regimes for ventilating parcels is somewhat similar to that of persisting NASTMW parcels, albeit with a larger contribution from mixing at the short timescales. Figure 9b shows that the interquartile range and whiskers are symmetric with the median around 0 for timescales less than 20 days, with the median becoming positive at longer timescales. However, since the normalized  $\Delta\text{DIC}$  for regimes at timescales less than 30 days is negative, this net negative contribution must be due to strongly depleting outlier regimes, associated with vigorous mixing. In Figure S43 in Supporting Information S1, we identify regime timescales and magnitudes based on the DIC anomaly due to mixing processes. Interestingly, we find that about



**Figure 9.**  $\Delta\text{DIC}$  contribution of each timescale for ventilating NASTMW parcels. (a) Relative  $\Delta\text{DIC}$  of regimes of each timescale. (b) Boxplot of magnitudes of each regime for each timescale.



**Figure 10.** Similar to Figure 4, but for exported NASTMW parcels. (a) Distribution of total  $\Delta$ DIC per trajectory, averaged over initialization years 1995–2015. (b) Relative contribution of each process to the average  $\Delta$ DIC, for different  $\Delta$ DIC strengths. (c) Mean of yearly average  $\Delta$ DIC of all trajectories. (d–f) Trajectory statistics per month, averaged across the different years for the total DIC rate of change (d), soft-tissue processes (e), and mixing fluxes (f). Carbonate and residual terms are much smaller and are shown in Figures S40g and S40 h in Supporting Information S1.

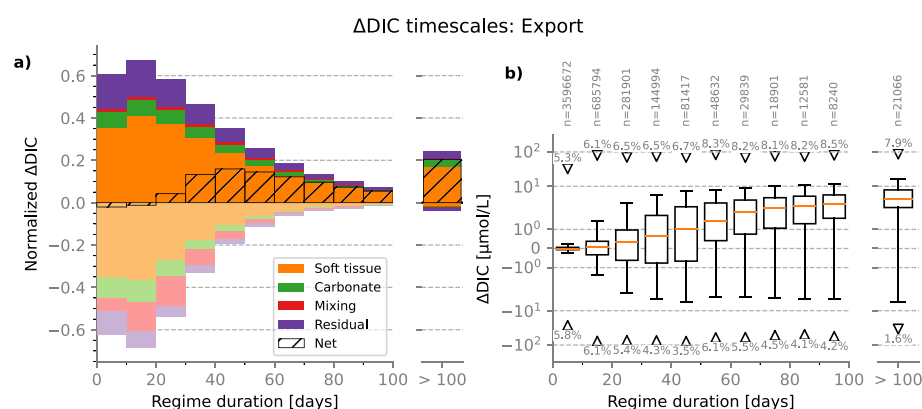
40% of the net contribution of mixing processes has regime timescales of more than 100 days. When assuming a regime-based view of the total DIC anomaly, the relatively steady DIC depletion due to mixing during wintertime ventilation can be temporarily counteracted by local soft-tissue remineralization, such that mixing is not able to cause the total DIC anomaly to persistently decrease for such long timescales.

### 3.4. The Export Pathway

NASTMW parcels that get exported to denser surroundings mostly undergo a net positive  $\Delta$ DIC (Figure 10), with a yearly mean of 9.9  $\mu\text{mol L}^{-1}$ . We recall that here, parcels are integrated for a total of 2 years, during which their potential density remains, for at least the entire second year, higher than their potential density upon exiting NASTMW (Section 2.4).

The distribution of  $\Delta$ DIC is asymmetric, with a longer tail in the positive direction (Figure 10a). Soft-tissue processes make up the bulk of the  $\Delta$ DIC for trajectories in the positive tail (Figure 10b). Note that for small and negative  $\Delta$ DIC, the residual becomes more prominent, indicating that the DIC budget becomes less well constrained by our disentanglement method (Section 2.5). Mixing fluxes again are concentrated in the winter months of the first year. Due to the way we select exported parcels, some may be temporarily entrained into the mixing layer in the first year of integration. However, outside of the first winter months, the mean DIC changes are solely governed by soft-tissue processes. Note that after the first year, these are effectively zero, albeit with the 5th and 95th percentile ranging between values of around  $\pm 2 \mu\text{mol L}^{-1}$  (Figure 10e), while the residual has a range of  $\pm 1 \mu\text{mol L}^{-1}$  (Figures S40g and S40h in Supporting Information S1). Since these ranges are of the same order, while the mean is close to zero, we conclude that after the NASTMW parcels remain exported, they undergo no clear net DIC depletion or enrichment in the second year; the change in  $\Delta$ DIC occurs before.

Looking at enrichment and depletion regimes and timescales (Figure 11), we see that at short timescales of less than a month, positive and negative  $\Delta$ DIC regimes nearly balance one another. The net  $\Delta$ DIC of regimes with longer timescales becomes positive, dominated by soft-tissue remineralization. Mixing mainly acts to deplete exporting NASTMW parcels of their DIC at timescales of around a month and less, while, photosynthesis and remineralization balance each other out at timescales up to 2 weeks. At short timescales, the enrichment and depletion magnitudes show a symmetric distribution, also in terms of outliers (Figure 11b), meaning that at these timescales, there is a balanced counteraction.



**Figure 11.** ΔDIC contribution of each timescale for exported NASTMW parcels. (a) Relative ΔDIC of regimes of each timescale. (b) Boxplot of magnitudes of each regime for each timescale.

Exported parcels remain in waters of higher density than the local NASTMW and thus are situated at deeper depths. Compared to the persistence pathway (Figure 7a), it can therefore seem counter-intuitive that exported parcels experience more photosynthesis-dominated regimes at timescales of a few weeks, even if these regimes are balanced by remineralization (Figure 11a). However, note that in the thinner flanks of NASTMW (Figure 1b), parcels are less likely to persist if the NASTMW shrinks between years, such that they get exported instead. On average, exported parcels in such regions may then be located at shallower depths and experience more photosynthesis than parcels that in such years persist in the central core of NASTMW, which extends to deeper depths.

While the number of parcels that we consider exported depends on the potential density threshold,  $\Delta\sigma$ , these parcels qualitatively exhibit similar total ΔDIC, regime magnitudes, and timescales (Text S4 in Supporting Information S1).

#### 4. Summary and Discussion

We adopted a Lagrangian frame of reference to study how DIC concentrations are altered along different NASTMW pathways in an eddy-permitting model that reproduces NASTMW for process study purposes. Of the four pathways considered, parcels experience the largest increase in DIC during subduction from the mixed layer into NASTMW, with an order of magnitude of  $\sim 100 \mu\text{mol L}^{-1}$ . However, only 1.2% of parcels subduct over the course of a year. This percentage increases to 3.7% and 5.8% if we allow parcels to subduct over longer timescales of 2 and 3 years respectively, while the increase in DIC remains similar at  $\sim 110 \mu\text{mol L}^{-1}$ . This implies that parcels generally take longer to move from the summer mixed layer to summer NASTMW, while the total enrichment along the subduction path is roughly unaffected. The persistence pathway makes up the largest fraction at 25.9%, which is in agreement with the findings of Gary et al. (2014). The subduction, ventilation, and export pathways had not been previously explored, and no previous study had yet investigated DIC concentrations along mode water pathways. Kwon et al. (2015) explore the timescales between the re-outcropping of NASTMW parcels, which somewhat resembles our ventilation pathway. However, the main differences are that our study requires parcels to be directly in the mixing layer instead of in an outcropping NASTMW column, and to reside in NASTMW for two consecutive summers, which complicates direct comparisons. While our results do not apply directly to other subtropical mode waters, they may provide initial qualitative hints of their DIC dynamics until further research is available.

Generally, a downward displacement of parcels is associated with net DIC enrichment. This is in line with the positive downward gradient of observed DIC in the water column, set by the remineralization of organic material. It then makes sense that the net ΔDIC for each of the four pathways is positive (Table 1), as the Subtropical Gyre is associated with net sinking (Berglund et al., 2022; Spall, 1992). Subducting parcels adjust to the vertical DIC gradient mostly through vertical mixing, but as longer subduction times are allowed (Text S3 in Supporting Information S1), the contribution from mixing shrinks in favor of direct remineralization within the parcel. Following the spring bloom, downward-moving persisting NASTMW parcels and exported NASTMW parcels also experience enrichment by remineralization directly. Ventilating parcels on the whole experience only a small



appreciable net DIC enrichment during 1 year, which is of a similar order of magnitude as the surface ocean model DIC trend (Figure S12 in Supporting Information S1). This could indicate that ventilating trajectories propagate DIC increases at the surface toward the NASTMW interior. Unfortunately, model biases (Text S1 in Supporting Information S1) prevent us from directly comparing these values to the observed Eulerian DIC trend at the BATS-site ( $1.5 \mu\text{mol kg}^{-1} \text{yr}^{-1}$ ; Bates, 2012). These ventilating parcels follow a cycle where they first supply DIC to the euphotic zone by vertical mixing in late winter, followed by remineralization of organic material in the following months. The net sinking distance over a ventilation cycle is also correlated with enrichment.

The timescales at which photosynthesis depletes parcels of DIC are of the order of weeks, corresponding to observations of the spring bloom in the Sargasso Sea (Nelson et al., 2004). This depletion is most prominent in persisting, ventilating, and exported parcels. For these pathways, mixing also has a depleting component at similar timescales, which is associated with an upward supply of DIC toward the surface. Mixing-associated depletion peaks in March when the mixed layer depth is at its maximum, re-establishing a link between NASTMW and the surface. This highlights the importance of NASTMW as a reservoir that can store and resupply carbon to the ocean surface (Bates et al., 2002), with relevance to ocean biology and ocean-atmosphere carbon exchange.

While the four pathways chosen for this study are non-exclusive and non-exhaustive, they still provide a good picture of carbon cycling in NASTMW. This is corroborated by the fact that when all trajectories are analyzed together (Text S6 in Supporting Information S1), they qualitatively resemble the persistence pathway and aspects of the ventilation and export pathways. Backward-in-time trajectories also resemble the persistence pathway, with the minor contribution from the subduction pathway superimposed on this. We think that the trajectories that are unaccounted for will often resemble the persistence pathway, because the aggregate of all trajectories qualitatively resembles the persistence pathway strongly, while it only accounts for about a quarter of all pathways. These “unaccounted trajectories” can for instance be parcels leaving NASTMW only temporarily while not being ventilated or exported, or parcels that remain in the direct vicinity of NASTMW where carbon dynamics may be somewhat similar.

In the context of carbon sequestration in the Sargasso Sea, our findings show that once NASTMW parcels are exported, they experience only small changes in DIC concentrations, which average out each other for at least 1 year. Some of these parcels may re-outcrop during strong convection in the following winters (Kwon et al., 2015), which re-liberates their carbon (Bates et al., 2002). However, exported parcels may also further sink and travel out of the NASTMW ventilation region to the Subpolar Gyre over timescales  $>10$  years (Gary et al., 2014). Berglund et al. (2022) show that transport between the Subtropical Gyre and Subpolar Gyre occurs in a downward-spiraling fashion over timescales of several decades. The long-term fate of carbon sequestered through the export of NASTMW parcels provides a direction for future research. We find that before such sequestration, DIC concentrations are set primarily due to mixing and to a lesser extent due to remineralization during a parcel's journey from the mixed layer to NASTMW.

While this study did not consider NASTMW trends in the face of global (ocean) warming, we know that NASTMW is influenced by climate change. Observations show that ventilation and formation of NASTMW have decreased due to surface warming (Stevens et al., 2020). Under a strong warming scenario (SSP5-8.5), CMIP6 models report a shallowing of the winter mixed layer in the NASTMW formation region (Fox-Kemper et al., 2021), which would further decrease the ventilation of NASTMW parcels. This would decrease NASTMW formation and thus volume, decreasing the amount of heat and carbon that it can buffer, in the latter case allowing less carbon to potentially sequester through export of NASTMW parcels. We did not investigate these effects due to model biases (Text S1 in Supporting Information S1) and because of the limited temporal extent in the face of high interannual and decadal NASTMW variability (Deremble & Dewar, 2013; Kwon & Riser, 2004; Stevens et al., 2020). However, a future similar study using trajectories in a state-of-the-art Earth system model could shed light on this.

Of the four processes considered, soft-tissue processes and vertical mixing dominate DIC concentration changes. Carbonate processes play a much smaller role at these NASTMW depths and sub-annual timescales (Williams & Follows, 2011), sometimes with a smaller contribution than the residual. We note that here we estimated the carbonate term from alkalinity, while in reality it is also affected by nitrification. Still, we could not detect a systematic bias in the carbonate term (Section 2.5). Future studies that are interested in how carbonate processes influence DIC concentrations along Lagrangian trajectories would benefit from using a biogeochemical model

where all the required state variables are stored for constraining the carbonate term. Exact calculation of the carbonate term can for example, become important when studying Lagrangian carbon dynamics in the deep ocean where carbonate dissolution plays a more prominent role.

Time series of carbon along Lagrangian trajectories have previously been studied by Brady et al. (2021) in the context of upwelling in the Southern Ocean. Like Cetina-Heredia et al. (2018) did for nitrate, Brady et al. (2021) characterized DIC timescales by the Lagrangian decorrelation timescale. However, decorrelation metrics assume that Lagrangian biogeochemical time series are stationary, while in reality biogeochemical depletion and enrichment are highly dependent on the spatial (vertical and horizontal) and temporal location of the water parcel. For example, the DIC time series of a parcel can be influenced by the entrainment into an eddy that experiences high primary productivity, or by a quick decrease in vertical mixing after subduction through the thermocline. These processes are highly non-linear and non-stationary. This is why we introduced a straightforward approach where we define enrichment and depletion regimes between local minima and maxima in smoothed Lagrangian DIC anomaly time series. Also, unlike methods based on spectral analysis, our method reveals regime timescales while staying agnostic about any periodicity, which may not be present.

Model data constraints prevent us from investigating the full mesoscale spectrum or submesoscale processes and variability, as higher resolution model data is not available for large regions over the span of decades. To deal with model biases in our eddy-permitting set-up, we tuned our NASTMW definition criteria for a realistic model volume and thickness, but, for example, our winter NASTMW core is too shallow (Text S1 in Supporting Information S1), possibly leading to an underestimation of the export pathway, which would be influenced by larger vertical excursions of NASTMW depths between summer and winter. Gan et al. (2023) show that an eddy-rich model would more faithfully reproduce the observed NASTMW spread and volume. Moreover, the unresolved submesoscale dynamics have large implications for biogeochemistry, for example, by creating fronts that provide short-lived nutrient pulses of just a few days (Lévy et al., 2012; Mahadevan, 2016). The findings in this study instead are chiefly related to mesoscale ocean dynamics, with a resolution similar to physical ocean components of state-of-the-art earth system models (Hewitt et al., 2020). While a similar study at a submesoscale resolution is at present computationally unfeasible, more process-based submesoscale Lagrangian studies, such as by Freilich et al. (2022) on phytoplankton growth rates, provide first steps in understanding Lagrangian carbon dynamics at smaller scales.

Our findings highlight that individual parcels undergo DIC enrichment and depletion regimes over a range of timescales and magnitudes, due to a complex interplay of vertical mixing and biogeochemical processes. We find that on short timescales of the order of weeks, enrichment and depletion often oppose one another, which for the subduction, persistence, and export pathways leads to a relatively small net  $\Delta$ DIC at these timescales, which is why the largest net changes in DIC occur on longer timescales. Bulk Eulerian studies average out this underlying complexity of enrichment and depletion unfolding over different timescales. Our approach can thus complement Eulerian approaches when investigating the carbon cycle. This also applies beyond the context of NASTMW or mode waters entirely; our Lagrangian process and timescale decomposition can be applied to any study aimed at better understanding carbon dynamics along water pathways. For example, while Eulerian approaches are the dominant method to study marine carbon dioxide removal through ocean alkalinity enhancement (Fennel et al., 2023), our methods may be used to study how alkalinity enhancement interventions influence DIC at different timescales along pathways of water downstream from intervention sites. Similarly, one could disentangle influences on  $p\text{CO}_2$ , phytoplankton, or even ecosystems if more model state variables are available.

### Data Availability Statement

The code to reproduce the results and figures from this paper is stored in YODA, Utrecht University's persistent data storage platform, see Reijnders et al. (2024) or <https://doi.org/10.24416/UU01-05B2AT>. The physical hindcast product FREEGLORYS2V4 was made available by Mercator Ocean International on request, and the biogeochemical hindcast product FREEBIORYS2V4 is available at <https://doi.org/10.48670/moi-00019> (E.U. Copernicus Marine Service Information (CMEMS), 2023). Bottle and DIC data used for model-data comparison in Text S1 in Supporting Information S1 are available through the CLIVAR and Carbon Hydrographic Data Office at <https://cchdo.ucsd.edu> (Pickard, 2022; Swift et al., 2022; Toole & MacDonald, 2022). WOA18 data is available at <https://www.ncei.noaa.gov/access/world-ocean-atlas-2018/> (Boyer et al., 2018). WOA23 data is

available at <https://www.ncei.noaa.gov/access/world-ocean-atlas-2023/> (Reagan & NOAA National Centers for Environmental Information, 2023). The Parcels Lagrangian framework version 2.4.1 is available at <https://doi.org/10.5281/ZENODO.7680187> (Van Sebille et al., 2023).

### Acknowledgments

DR and EvS were supported through funding from the Netherlands Organization for Scientific Research (NWO), Earth and Life Sciences, through project OCENW.KLEIN.085. DCEB was supported by UKRI's (UK Research and Innovation) CHALKY project NE/Y004388/1. We thank Siren Rühls and Jamie Palter for useful discussions and feedback, and Coralie Perruche for help with the FREEBIORYS2V4 product. This study has been conducted using E.U. Copernicus Marine Service Information. Bottle and CTD data along A20 in 2003 and 2012 was supported by the NSF/NOAA funded U.S Global Ocean Carbon and Repeat Hydrography Program.

### References

- Atkins, J., Andrews, O., & Frenger, I. (2022). Quantifying the contribution of ocean mesoscale eddies to low oxygen extreme events. *Geophysical Research Letters*, 49(15), e2022GL098672. <https://doi.org/10.1029/2022GL098672>
- Aumont, O., Ethé, C., Tagliabue, A., Bopp, L., & Gehlen, M. (2015). PISCES-v2: An ocean biogeochemical model for carbon and ecosystem studies. *Geoscientific Model Development*, 8(8), 2465–2513. <https://doi.org/10.5194/gmd-8-2465-2015>
- Bates, N. R. (2012). Multi-decadal uptake of carbon dioxide into subtropical mode water of the North Atlantic Ocean. *Biogeosciences*, 9(7), 2649–2659. <https://doi.org/10.5194/bg-9-2649-2012>
- Bates, N. R., Best, M. H. P., Neely, K., Garley, R., Dickson, A. G., & Johnson, R. J. (2012). Detecting anthropogenic carbon dioxide uptake and ocean acidification in the North Atlantic Ocean. *Biogeosciences*, 9(7), 2509–2522. <https://doi.org/10.5194/bg-9-2509-2012>
- Bates, N. R., Pequignat, A. C., Johnson, R. J., & Gruber, N. (2002). A short-term sink for atmospheric CO<sub>2</sub> in subtropical mode water of the North Atlantic Ocean. *Nature*, 420(6915), 489–493. <https://doi.org/10.1038/nature01253>
- Berglund, S., Döös, K., Groeskamp, S., & McDougall, T. J. (2022). The downward spiralling nature of the North Atlantic subtropical Gyre. *Nature Communications*, 13(1), 2000. <https://doi.org/10.1038/s41467-022-29607-8>
- Bernard, B., Madec, G., Penduff, T., Molines, J.-M., Treguier, A.-M., Le Sommer, J., et al. (2006). Impact of partial steps and momentum advection schemes in a global ocean circulation model at eddy-permitting resolution. *Ocean Dynamics*, 56(5–6), 543–567. <https://doi.org/10.1007/s10236-006-0082-1>
- Billheimer, S., & Talley, L. D. (2013). Near cessation of eighteen degree water renewal in the western North Atlantic in the warm winter of 2011–2012. *Journal of Geophysical Research: Oceans*, 118(12), 6838–6853. <https://doi.org/10.1002/2013JC009024>
- Billheimer, S., & Talley, L. D. (2016). Annual cycle and destruction of eighteen degree water. *Journal of Geophysical Research: Oceans*, 121(9), 6604–6617. <https://doi.org/10.1002/2016JC011799>
- Billheimer, S., Talley, L. D., & Martz, T. R. (2021). Oxygen seasonality, utilization rate, and impacts of vertical mixing in the Eighteen Degree Water Region of the Sargasso Sea as observed by profiling biogeochemical floats. *Global Biogeochemical Cycles*, 35(3), e2020GB006824. <https://doi.org/10.1029/2020GB006824>
- Blanke, B., & Delecluse, P. (1993). Variability of the tropical Atlantic Ocean simulated by a general circulation model with two different mixed-layer physics. *Journal of Physical Oceanography*, 23(7), 1363–1388. [https://doi.org/10.1175/1520-0485\(1993\)023<1363:VOTTAO>2.0.CO;2](https://doi.org/10.1175/1520-0485(1993)023<1363:VOTTAO>2.0.CO;2)
- Boyer, T. P., Garcia, H. E., Locarnini, R. A., Zweng, M. M., Mishonov, A. V., Reagan, J. R., et al. (2018). World Ocean Atlas 2018, mixed layer depth - Statistical mean on 1/4° grid for 2005–2017. [Dataset]. NOAA National Centers for Environmental Information. Retrieved from <https://www.ncei.noaa.gov/archive/accession/NCEI-WOA18>
- Brady, R. X., Maltrud, M. E., Wolfram, P. J., Drake, H. F., & Lovenduski, N. S. (2021). The influence of ocean topography on the upwelling of carbon in the Southern Ocean. *Geophysical Research Letters*, 48(19). <https://doi.org/10.1029/2021GL095088>
- Brainerd, K. E., & Gregg, M. C. (1995). Surface mixed and mixing layer depths. *Deep Sea Research Part I: Oceanographic Research Papers*, 42(9), 1521–1543. [https://doi.org/10.1016/0967-0637\(95\)00068-H](https://doi.org/10.1016/0967-0637(95)00068-H)
- Brewer, P. G., Wong, G. T., Bacon, M. P., & Spencer, D. W. (1975). An oceanic calcium problem? *Earth and Planetary Science Letters*, 26(1), 81–87. [https://doi.org/10.1016/0012-821X\(75\)90179-X](https://doi.org/10.1016/0012-821X(75)90179-X)
- Carlson, C. A., Ducklow, H. W., & Michaels, A. F. (1994). Annual flux of dissolved organic carbon from the euphotic zone in the northwestern Sargasso Sea. *Nature*, 371(6496), 405–408. <https://doi.org/10.1038/371405a0>
- Cetina-Heredia, P., van Sebille, E., Matear, R. J., & Roughan, M. (2018). Nitrate sources, supply, and phytoplankton growth in the Great Australian Bight: An Eulerian-Lagrangian Modeling approach. *Journal of Geophysical Research: Oceans*, 123(2), 759–772. <https://doi.org/10.1002/2017JC013542>
- Davis, X. J., Straneo, F., Kwon, Y.-O., Kelly, K. A., & Toole, J. M. (2013). Evolution and formation of North Atlantic eighteen degree water in the Sargasso Sea from moored data. *Deep Sea Research Part II: Topical Studies in Oceanography*, 91, 11–24. <https://doi.org/10.1016/j.dsr2.2013.02.024>
- Dee, D. P., Uppala, S. M., Simmons, A. J., Berrisford, P., Poli, P., Kobayashi, S., et al. (2011). The ERA-interim reanalysis: Configuration and performance of the data assimilation system. *Quarterly Journal of the Royal Meteorological Society*, 137(656), 553–597. <https://doi.org/10.1002/qj.828>
- Delandmeter, P., & van Sebille, E. (2019). The Parcels v2.0 Lagrangian framework: New field interpolation schemes. *Geoscientific Model Development*, 12(8), 3571–3584. <https://doi.org/10.5194/gmd-12-3571-2019>
- Deremble, B., & Dewar, W. K. (2013). Volume and potential vorticity budgets of eighteen degree water. *Journal of Physical Oceanography*, 43(11), 2309–2321. <https://doi.org/10.1175/JPO-D-13-052.1>
- E.U. Copernicus Marine Service Information (CMEMS). (2023). Global Ocean biogeochemistry hindcast. [Dataset]. *Marine Data Store (MDS)*. <https://doi.org/10.48670/moi-00019>
- Fennel, K., Long, M. C., Algar, C., Carter, B., Keller, D., Laurent, A., et al. (2023). Modelling considerations for research on ocean alkalinity enhancement (OAE). *State of the Planet Discussions*, 2023, 1–47. <https://doi.org/10.5194/sp-2-0ae2023-9-2023>
- Forget, G., Maze, G., Buckley, M., & Marshall, J. (2011). Estimated seasonal cycle of North Atlantic eighteen degree water volume. *Journal of Physical Oceanography*, 41(2), 269–286. <https://doi.org/10.1175/2010JPO4257.1>
- Fox-Kemper, B., Hewitt, H., Xiao, C., Adalgeirsdóttir, G., Drijfhout, S., Edwards, T., et al. (2021). Ocean, cryosphere and sea level change [Book Section]. In V. Masson-Delmotte (Ed.), et al. (Eds.), *Climate change 2021: The physical science basis. Contribution of working group I to the sixth assessment report of the intergovernmental panel on climate change* (pp. 1211–1362). Cambridge University Press. <https://doi.org/10.1017/9781009157896.011>
- Fratantoni, D. M., Kwon, Y.-O., & Hodges, B. A. (2013). Direct observation of subtropical mode water circulation in the western North Atlantic Ocean. *Deep Sea Research Part II: Topical Studies in Oceanography*, 91, 35–56. <https://doi.org/10.1016/j.dsr2.2013.02.027>
- Freilich, M. A., Flierl, G., & Mahadevan, A. (2022). Diversity of growth rates maximizes phytoplankton productivity in an eddying ocean. *Geophysical Research Letters*, 49(3), e2021GL096180. <https://doi.org/10.1029/2021GL096180>
- Friedlingstein, P., O'Sullivan, M., Jones, M. W., Andrew, R. M., Gregor, L., Hauck, J., et al. (2022). Global carbon budget 2022. *Earth System Science Data*, 14(11), 4811–4900. <https://doi.org/10.5194/essd-14-4811-2022>

- Gan, B., Yu, J., Wu, L., Danabasoglu, G., Small, R. J., Baker, A. H., et al. (2023). North Atlantic subtropical mode water formation controlled by Gulf Stream fronts. *National Science Review*, *10*(9), nwad133. <https://doi.org/10.1093/nsr/nwad133>
- Garric, G., & Parent, L. (2017). Quality information document for global ocean reanalysis products GLOBAL-REANALYSIS-PHY-001-025. *Tech. Rep. No. CMEMS-GLO-QUID-001-025*. Copernicus Marine Service. Retrieved from <https://catalogue.marine.copernicus.eu/documents/QUID/CMEMS-GLO-QUID-001-025.pdf>
- Gary, S. F., Lozier, M. S., Kwon, Y.-O., & Park, J. J. (2014). The fate of North Atlantic subtropical mode water in the FLAME model. *Journal of Physical Oceanography*, *44*(5), 1354–1371. <https://doi.org/10.1175/JPO-D-13-0202.1>
- Good, S. A., Martin, M. J., & Rayner, N. A. (2013). EN4: Quality controlled ocean temperature and salinity profiles and monthly objective analyses with uncertainty estimates: The EN4 DATA set. *Journal of Geophysical Research: Oceans*, *118*(12), 6704–6716. <https://doi.org/10.1002/2013JC009067>
- Gruber, N., Sarmiento, J. L., & Stocker, T. F. (1996). An improved method for detecting anthropogenic CO<sub>2</sub> in the oceans. *Global Biogeochemical Cycles*, *10*(4), 809–837. <https://doi.org/10.1029/96GB01608>
- Hanawa, K., & Talley, L. D. (2001). Mode waters. In G. Siedler, J. Church, & W. J. Gould (Eds.), *Ocean circulation and climate: Observing and modelling the global ocean* (pp. 373–386). Academic Press. [https://doi.org/10.1016/S0074-6142\(01\)80129-7](https://doi.org/10.1016/S0074-6142(01)80129-7)
- Hewitt, H. T., Roberts, M., Mathiot, P., Biastoch, A., Blockley, E., Chassignet, E. P., et al. (2020). Resolving and parameterising the ocean mesoscale in earth system models. *Current Climate Change Reports*, *6*(4), 137–152. <https://doi.org/10.1007/s40641-020-00164-w>
- Joyce, T. M. (2012). New perspectives on eighteen-degree water formation in the North Atlantic. *Journal of Oceanography*, *68*(1), 45–52. <https://doi.org/10.1007/s10872-011-0029-0>
- Joyce, T. M., Thomas, L. N., Dewar, W. K., & Girton, J. B. (2013). Eighteen degree water formation within the Gulf Stream during CLIMODE. *Deep Sea Research Part II: Topical Studies in Oceanography*, *91*, 1–10. <https://doi.org/10.1016/j.dsr2.2013.02.019>
- Key, R. M., Kozyr, A., Sabine, C. L., Lee, K., Wanninkhof, R., Bullister, J. L., et al. (2004). A global ocean carbon climatology: Results from global data analysis project (GLODAP). *Global Biogeochemical Cycles*, *18*(4), GB4031. <https://doi.org/10.1029/2004GB002247>
- Klein, B., & Hogg, N. (1996). On the variability of 18 Degree Water formation as observed from moored instruments at 55°W. *Deep Sea Research Part I: Oceanographic Research Papers*, *43*(11–12), 1777–1806. [https://doi.org/10.1016/S0967-0637\(96\)00069-6](https://doi.org/10.1016/S0967-0637(96)00069-6)
- Krémeur, A.-S., Lévy, M., Aumont, O., & Reverdin, G. (2009). Impact of the subtropical mode water biogeochemical properties on primary production in the North Atlantic: New insights from an idealized model study. *Journal of Geophysical Research*, *114*(C7), C07019. <https://doi.org/10.1029/2008JC005161>
- Kwon, Y.-O., Park, J.-J., Gary, S. F., & Lozier, M. S. (2015). Year-to-year reoccurring of Eighteen Degree Water in an eddy-resolving ocean simulation. *Journal of Physical Oceanography*, *45*(4), 1189–1204. <https://doi.org/10.1175/JPO-D-14-0122.1>
- Kwon, Y.-O., & Riser, S. C. (2004). North Atlantic subtropical mode water: A history of ocean-atmosphere interaction 1961–2000. *Geophysical Research Letters*, *31*(19), L19307. <https://doi.org/10.1029/2004GL021116>
- Lan, X., Tans, P., & Thoning, K., & NOAA Global Monitoring Laboratory. (2023). Trends in globally-averaged CO<sub>2</sub> determined from NOAA global monitoring laboratory measurements. *NOAA GML*. <https://doi.org/10.15138/9NOH-ZH07>
- Levine, N. M., Doney, S. C., Lima, I., Wanninkhof, R., Bates, N. R., & Feely, R. A. (2011). The impact of the North Atlantic Oscillation on the uptake and accumulation of anthropogenic CO<sub>2</sub> by North Atlantic Ocean mode waters. *Global Biogeochemical Cycles*, *25*(3), GB3022. <https://doi.org/10.1029/2010GB003892>
- Lévy, M., Couespel, D., Haëck, C., Keerthi, M., Mangolte, I., & Prend, C. J. (2024). The impact of fine-scale currents on biogeochemical cycles in a changing ocean. *Annual Review of Marine Science*, *16*(1), 191–215. <https://doi.org/10.1146/annurev-marine-020723-020531>
- Lévy, M., Ferrari, R., Franks, P. J. S., Martin, A. P., & Rivière, P. (2012). Bringing physics to life at the submesoscale. *Geophysical Research Letters*, *39*(14), 13. <https://doi.org/10.1029/2012GL052756>
- Li, K., Maze, G., & Mercier, H. (2022). Ekman transport as the driver of extreme interannual formation rates of Eighteen Degree Water. *Journal of Geophysical Research: Oceans*, *127*(1), e2021JC017696. <https://doi.org/10.1029/2021JC017696>
- Madec, G., Benschila, R., Bricaud, C., Coward, A., Dobricic, S., Furner, R., & Oddo, P. (2013). NEMO ocean engine (Computer software manual No. 27). *Zenodo*. <https://doi.org/10.5281/zenodo.1464817>
- Mahadevan, A. (2016). The impact of submesoscale physics on primary productivity of plankton. *Annual Review of Marine Science*, *8*(1), 161–184. <https://doi.org/10.1146/annurev-marine-010814-015912>
- Maze, G., Forget, G., Buckley, M., Marshall, J., & Cerovecki, I. (2009). Using transformation and formation maps to study the role of air–sea heat fluxes in North Atlantic Eighteen Degree Water formation. *Journal of Physical Oceanography*, *39*(8), 1818–1835. <https://doi.org/10.1175/2009JPO3985.1>
- McDougall, T. J., & Barker, P. M. (2011). *Getting started with TEOS-10 and the gibbs seawater (GSW) oceanographic toolbox*. SCOR/IAPSO WG127.
- McGillicuddy, D. J., Robinson, A. R., Siegel, D. A., Jannasch, H. W., Johnson, R., Dickey, T. D., et al. (1998). Influence of mesoscale eddies on new production in the Sargasso Sea. *Nature*, *394*(6690), 263–266. <https://doi.org/10.1038/28367>
- National Oceanographic Data Center (U.S.) Ocean Climate Laboratory, Conkright, M. E., Locarnini, R. A., Garcia, H. E., O’Brien, T. D., Boyer, T. P., Stephens, C., et al. (2002). World Ocean Atlas 2001: Objective analyses, data statistics, and figures: CD-ROM documentation. [Technical Report]. <https://repository.library.noaa.gov/view/noaa/1174>
- Nelson, N., Siegel, D., & Yoder, J. (2004). The spring bloom in the northwestern Sargasso Sea: Spatial extent and relationship with winter mixing. *Deep Sea Research Part II: Topical Studies in Oceanography*, *51*(10–11), 987–1000. [https://doi.org/10.1016/S0967-0645\(04\)00096-7](https://doi.org/10.1016/S0967-0645(04)00096-7)
- Palter, J. B., Lozier, M. S., & Barber, R. T. (2005). The effect of advection on the nutrient reservoir in the North Atlantic subtropical gyre. *Nature*, *437*(7059), 687–692. <https://doi.org/10.1038/nature03969>
- Perruche, C., Szczypta, C., Paul, J., & Drévillon, M. (2019). Quality information document global production centre GLOBAL-REANALYSIS\_BIO\_001\_029. (Tech. Rep. No. CMEMS-GLO-QUID-001-029). Copernicus Marine Service. Retrieved from <https://catalogue.marine.copernicus.eu/documents/QUID/CMEMS-GLO-QUID-001-029.pdf>
- Pickard, R. (2022). CTD and DIC bottle data from cruise 316N151\_3, WHP netCDF. Version: WHP netCDF [Dataset]. *CCHDO*. Retrieved from [https://cchdo.ucsd.edu/cruise/316N151\\_3](https://cchdo.ucsd.edu/cruise/316N151_3)
- Reagan, J. R., & NOAA National Centers for Environmental Information. (2023). World Ocean Atlas 2023, NCEI accession 0282728, temperature - Statistical mean on 1/4° grid for 1991–2020 [Dataset]. *NOAA National Centers for Environmental Information*. Retrieved from <https://www.ncei.noaa.gov/archive/accession/0282728>
- Reijnders, D., Bakker, D. C. E., & Van Sebille, E. (2024). Code and data for “disentangling carbon concentration changes along pathways of North Atlantic subtropical mode water” [Dataset]. *YODA, Data publication platform of Utrecht University*. <https://doi.org/10.24416/UU01-05B2AT>
- Reijnders, D., Deleersnijder, E., & Sebille, E. (2022). Simulating Lagrangian subgrid-scale dispersion on neutral surfaces in the ocean. *Journal of Advances in Modeling Earth Systems*, *14*(2), e2021MS002850. <https://doi.org/10.1029/2021MS002850>

- Sarmiento, J. L., & Gruber, N. (2006). *Ocean biogeochemical dynamics*. Princeton university press.
- Siedler, G., Kuhl, A., & Zenk, W. (1987). The Madeira mode water. *Journal of Physical Oceanography*, *17*(10), 1561–1570. [https://doi.org/10.1175/1520-0485\(1987\)017<1561:TMMW>2.0.CO;2](https://doi.org/10.1175/1520-0485(1987)017<1561:TMMW>2.0.CO;2)
- Siegel, D. A., McGillicuddy, D. J., & Fields, E. A. (1999). Mesoscale eddies, satellite altimetry, and new production in the Sargasso Sea. *Journal of Geophysical Research*, *104*(C6), 13359–13379. <https://doi.org/10.1029/1999JC900051>
- Spall, M. A. (1992). Cooling spirals and recirculation in the subtropical gyre. *Journal of Physical Oceanography*, *22*(5), 564–571. [https://doi.org/10.1175/1520-0485\(1992\)022<0564:CSARIT>2.0.CO;2](https://doi.org/10.1175/1520-0485(1992)022<0564:CSARIT>2.0.CO;2)
- Stevens, S. W., Johnson, R. J., Maze, G., & Bates, N. R. (2020). A recent decline in North Atlantic subtropical mode water formation. *Nature Climate Change*, *10*(4), 335–341. <https://doi.org/10.1038/s41558-020-0722-3>
- Sugimoto, S., Hanawa, K., Watanabe, T., Suga, T., & Xie, S.-P. (2017). Enhanced warming of the subtropical mode water in the North Pacific and North Atlantic. *Nature Climate Change*, *7*(9), 656–658. <https://doi.org/10.1038/nclimate3371>
- Swift, J., Feely, R., & Wanninkhof, R. (2022). CTD and DIC bottle data from cruise 33AT20120419, WHP netCDF. Version: WHP netCDF [Dataset]. *CCHDO*. <https://cchdo.ucsd.edu/cruise/33AT20120419>
- Talley, L. D., & Raymer, M. E. (1982). Eighteen degree water variability. *Journal of Marine Research*, *40*, 757–775.
- Toole, J., & MacDonald, A. (2022). CTD and DIC bottle data from cruise 316N200309, WHP netCDF. Version: WHP netCDF [Dataset]. *CCHDO*. Retrieved from <https://cchdo.ucsd.edu/cruise/316N200309>
- Van Sebille, E., Kehl, C., Lange, M., & Delandmeter, P., & The Parcels contributors. (2023). Parcels 2.4.1 [Software]. *Zenodo*. <https://doi.org/10.5281/zenodo.7680187>
- Williams, R. G., & Follows, M. (2011). *Ocean dynamics and the carbon cycle*. Cambridge University Press.
- Worthington, L. (1958). The 18° water in the Sargasso Sea. *Deep Sea Research (1953)*, *5*(2–4), 297–305. [https://doi.org/10.1016/0146-6313\(58\)90026-1](https://doi.org/10.1016/0146-6313(58)90026-1)
- Xu, L., Xie, S.-P., McClean, J. L., Liu, Q., & Sasaki, H. (2014). Mesoscale eddy effects on the subduction of North Pacific mode waters. *Journal of Geophysical Research: Oceans*, *119*(8), 4867–4886. <https://doi.org/10.1002/2014JC009861>

## References From the Supporting Information

- Bryan, F. O., Hecht, M. W., & Smith, R. D. (2007). Resolution convergence and sensitivity studies with North Atlantic circulation models. Part I: The western boundary current system. *Ocean Modelling*, *16*(3–4), 141–159. <https://doi.org/10.1016/j.ocemod.2006.08.005>
- Chassignet, E. P., & Marshall, D. P. (2008). Gulf Stream separation in numerical ocean models. In M. W. Hecht & H. Hasumi (Eds.), *Geophysical Monograph Series* (Vol. 177, pp. 39–61). American Geophysical Union. <https://doi.org/10.1029/177GM05>
- Flato, G., Marotzke, J., Abiodun, B., Braconnot, P., Chou, S., Collins, W., et al. (2013). Evaluation of climate models. In T. Stocker (Ed.), et al. (Eds.), *Climate change 2013: The physical science basis. Contribution of Working Group I to the fifth assessment report of the Intergovernmental Panel on Climate Change*. Cambridge University Press. <https://doi.org/10.1017/CBO9781107415324>
- Park, T., Park, W., & Latif, M. (2016). Correcting North Atlantic sea surface salinity biases in the Kiel climate model: Influences on ocean circulation and Atlantic multidecadal variability. *Climate Dynamics*, *47*(7–8), 2543–2560. <https://doi.org/10.1007/s00382-016-2982-1>